

Virtex-4 RocketIO Bit-Error Rate Tester User Guide

***ML42x Development
Platforms***

UG242 (v1.0) June 22, 2006





Xilinx is disclosing this Document and Intellectual Property (hereinafter “the Design”) to you for use in the development of designs to operate on, or interface with Xilinx FPGAs. Except as stated herein, none of the Design may be copied, reproduced, distributed, republished, downloaded, displayed, posted, or transmitted in any form or by any means including, but not limited to, electronic, mechanical, photocopying, recording, or otherwise, without the prior written consent of Xilinx. Any unauthorized use of the Design may violate copyright laws, trademark laws, the laws of privacy and publicity, and communications regulations and statutes.

Xilinx does not assume any liability arising out of the application or use of the Design; nor does Xilinx convey any license under its patents, copyrights, or any rights of others. You are responsible for obtaining any rights you may require for your use or implementation of the Design. Xilinx reserves the right to make changes, at any time, to the Design as deemed desirable in the sole discretion of Xilinx. Xilinx assumes no obligation to correct any errors contained herein or to advise you of any correction if such be made. Xilinx will not assume any liability for the accuracy or correctness of any engineering or technical support or assistance provided to you in connection with the Design.

THE DESIGN IS PROVIDED “AS IS” WITH ALL FAULTS, AND THE ENTIRE RISK AS TO ITS FUNCTION AND IMPLEMENTATION IS WITH YOU. YOU ACKNOWLEDGE AND AGREE THAT YOU HAVE NOT RELIED ON ANY ORAL OR WRITTEN INFORMATION OR ADVICE, WHETHER GIVEN BY XILINX, OR ITS AGENTS OR EMPLOYEES. XILINX MAKES NO OTHER WARRANTIES, WHETHER EXPRESS, IMPLIED, OR STATUTORY, REGARDING THE DESIGN, INCLUDING ANY WARRANTIES OF MERCHANTABILITY, FITNESS FOR A PARTICULAR PURPOSE, TITLE, AND NONINFRINGEMENT OF THIRD-PARTY RIGHTS.

IN NO EVENT WILL XILINX BE LIABLE FOR ANY CONSEQUENTIAL, INDIRECT, EXEMPLARY, SPECIAL, OR INCIDENTAL DAMAGES, INCLUDING ANY LOST DATA AND LOST PROFITS, ARISING FROM OR RELATING TO YOUR USE OF THE DESIGN, EVEN IF YOU HAVE BEEN ADVISED OF THE POSSIBILITY OF SUCH DAMAGES. THE TOTAL CUMULATIVE LIABILITY OF XILINX IN CONNECTION WITH YOUR USE OF THE DESIGN, WHETHER IN CONTRACT OR TORT OR OTHERWISE, WILL IN NO EVENT EXCEED THE AMOUNT OF FEES PAID BY YOU TO XILINX HEREUNDER FOR USE OF THE DESIGN. YOU ACKNOWLEDGE THAT THE FEES, IF ANY, REFLECT THE ALLOCATION OF RISK SET FORTH IN THIS AGREEMENT AND THAT XILINX WOULD NOT MAKE AVAILABLE THE DESIGN TO YOU WITHOUT THESE LIMITATIONS OF LIABILITY.

The Design is not designed or intended for use in the development of on-line control equipment in hazardous environments requiring fail-safe controls, such as in the operation of nuclear facilities, aircraft navigation or communications systems, air traffic control, life support, or weapons systems (“High-Risk Applications”). Xilinx specifically disclaims any express or implied warranties of fitness for such High-Risk Applications. You represent that use of the Design in such High-Risk Applications is fully at your risk.

© 2006 Xilinx, Inc. All rights reserved. XILINX, the Xilinx logo, and other designated brands included herein are trademarks of Xilinx, Inc. PowerPC is a trademark of IBM, Inc. All other trademarks are the property of their respective owners.

Revision History

The following table shows the revision history for this document.

Date	Version	Revision
06/22/06	1.0	Initial Xilinx release.

Table of Contents

Preface: About This Guide

Additional Resources	5
Conventions	5
Typographical	5
Online Document	6

Virtex-4 RocketIO Bit-Error Rate Tester

Related Documents	7
Introduction	7
The Reference Design	7
Test Setups	8
Synchronous Test Setups	8
Asynchronous Test Setups	9
Board Setup	11
System Clock Input	11
MGT Location	11
MGT Clock Inputs	12
SMA Cables	13
RS-232 Port	13
FPGA Configuration	13
Using Parallel Cable III, Parallel Cable IV, or Platform Cable USB	13
Using a System ACE Controller	14
User Push Button	16
User LEDs	16
MGT Clock Outputs	17
PC Terminal	19
Terminal Programs	19
Tera Term Pro Setup	19
XBERT Operation	22
Main Menu Screen	23
[0] Get System Info	23
[1] Setup SuperClock Module	24
[2] Setup PMA Clock Mode	25
[3] Setup Channel	28
[4] Test BER	31
[5] Enter ChipScope Mode	33
[6] Edit PMA Settings	39
[7] DRP Dump	40
[8] Scan Optimal PMA Settings	41
VIO Interface	43
Pattern Selection	44
References	47

About This Guide

The Virtex-4 RocketIO Bit Error Rate Tester (XBERT) Reference Design for the ML42x development platforms demonstrates a serial link between two or more Virtex-4 RocketIO Multi-Gigabit Transceiver (MGT) ports embedded within a single Virtex-4 FPGA. This user guide provides instructions to set up and operate the XBERT reference design on the ML421, ML423, ML424 and ML425 platforms.

Additional Resources

To find additional documentation, see the Xilinx website at:

<http://www.xilinx.com/literature>.

To search the Answer Database of silicon, software, and IP questions and answers, or to create a technical support WebCase, see the Xilinx website at:

<http://www.xilinx.com/support>.

Conventions

This document uses the following conventions. An example illustrates each convention.

Typographical

The following typographical conventions are used in this document:

Convention	Meaning or Use	Example
Courier font	Messages, prompts, and program files that the system displays	<code>speed grade: - 100</code>
Courier bold	Literal commands that you enter in a syntactical statement	ngdbuild <i>design_name</i>
Helvetica bold	Commands that you select from a menu	File →Open
	Keyboard shortcuts	Ctrl+C

Convention	Meaning or Use	Example
Italic font	Variables in a syntax statement for which you must supply values	ngdbuild <i>design_name</i>
	References to other manuals	See the <i>Development System Reference Guide</i> for more information.
	Emphasis in text	If a wire is drawn so that it overlaps the pin of a symbol, the two nets are <i>not</i> connected.
Square brackets []	An optional entry or parameter. However, in bus specifications, such as bus [7:0] , they are required.	ngdbuild [<i>option_name</i>] <i>design_name</i>
Braces { }	A list of items from which you must choose one or more	lowpwr = { on off }
Vertical bar	Separates items in a list of choices	lowpwr = { on off }
Vertical ellipsis . . .	Repetitive material that has been omitted	IOB #1: Name = QOUT' IOB #2: Name = CLKIN' . . .
Horizontal ellipsis ...	Repetitive material that has been omitted	allow block <i>block_name loc1 loc2 ... locn</i> ;

Online Document

The following conventions are used in this document:

Convention	Meaning or Use	Example
Blue text	Cross-reference link to a location in the current document	See the section " Additional Resources " for details. Refer to " Title Formats " in Chapter 1 for details.
Red text	Cross-reference link to a location in another document	See Figure 2-5 in the <i>Virtex-II Platform FPGA User Guide</i> .
Blue, underlined text	Hyperlink to a website (URL)	Go to http://www.xilinx.com for the latest speed files.

Virtex-4 RocketIO Bit-Error Rate Tester

Related Documents

Prior to using the XBERT reference design, the user should be familiar with a number of related technical documents. Please see the “References” section at the end of this Guide for full particulars and website URLs.

Introduction

The Reference Design

The Virtex™-4 RocketIO™ Bit-Error Rate Tester (XBERT) Reference Design [Ref 1] for the ML42x development platforms demonstrates a serial link between two or more Virtex-4 RocketIO Multi-Gigabit Transceiver (MGT) ports embedded within a single Virtex-4 FPGA. This user guide provides instructions to set up and operate the XBERT reference design on the ML421, ML423, ML424, and ML425 platforms (collectively referred to as the ML42x platform).

Figure 1 illustrates the XBERT reference design as a block diagram.

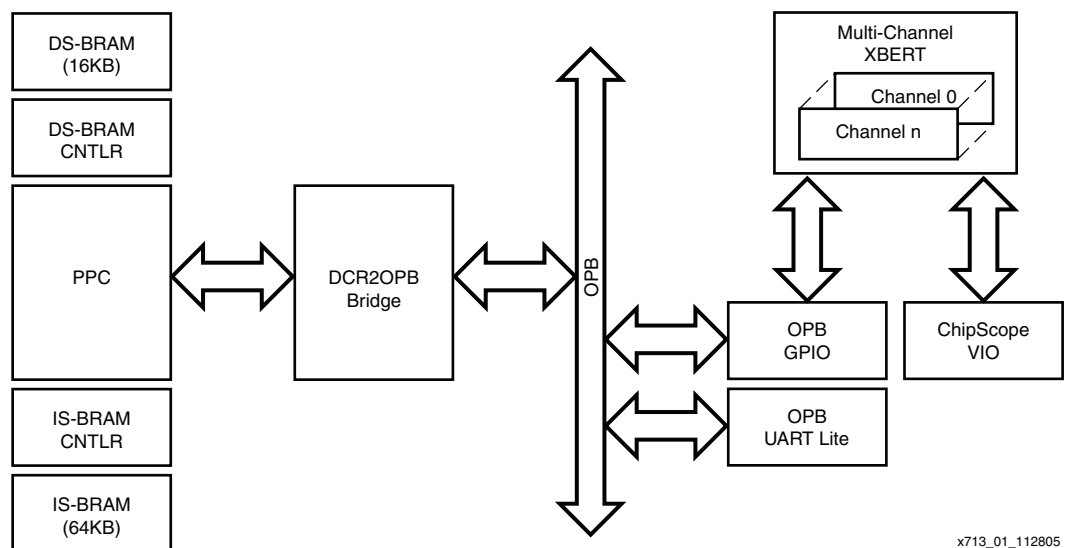


Figure 1: Hardware Block Diagram of the XBERT Reference Design

The XBERT reference design uses a multi-channel XBERT module to generate and verify high-speed serial data transmitted and received by the MGTs. Each channel in the design

x713_01_112805

contains two MGTs (MGT A and MGT B). These two MGTs connect to two dedicated pattern checkers; however, they share the same pattern generator. Each channel in the XBERT module operates independently of the others. The MGT serial data rate in each channel depends on the frequency of the reference clock and the internal PMA dividers. By incrementing channels, the XBERT reference design can simultaneously operate up to eight MGTs in an XC4VFX20 Virtex-4 device or up to twenty-four MGTs in an XC4VFX140 Virtex-4 device.

The pattern generator in the XBERT module constructs transmitting data using either a Pseudo-Random Bit Sequence (PRBS) pattern, a clock pattern, or a user defined pattern. The pattern checker in the XBERT module compares the incoming data with the expected data to analyze for errors.

The reference design consists of the embedded IBM® PowerPC™ 405 processor core (PPC405), a DCR-to-OPB bridge, a Data Side Block RAM controller (DS-BRAM-CNTLR), 16 Kbyte Data-Side Block RAMs (DS-BRAM), an Instruction Side Block RAM controller (IS-BRAM-CNTLR), and 64 Kbyte Instruction-Side Block RAMs (IS-BRAM). The reference design also includes an OPB bus that connects the OPB UART Lite and the OPB GPIO cores. The processor reads the status and statistical values from the XBERT module and sends control to the XBERT module via the 32-bit GPIO. The UART provides an interactive user interface for the reference design. The ChipScope™ Pro VIO is attached to the XBERT module to provide an alternative user interface. The XBERT reference design is built using the Embedded Development Kit [Ref 5] so it can be easily modified or extended.

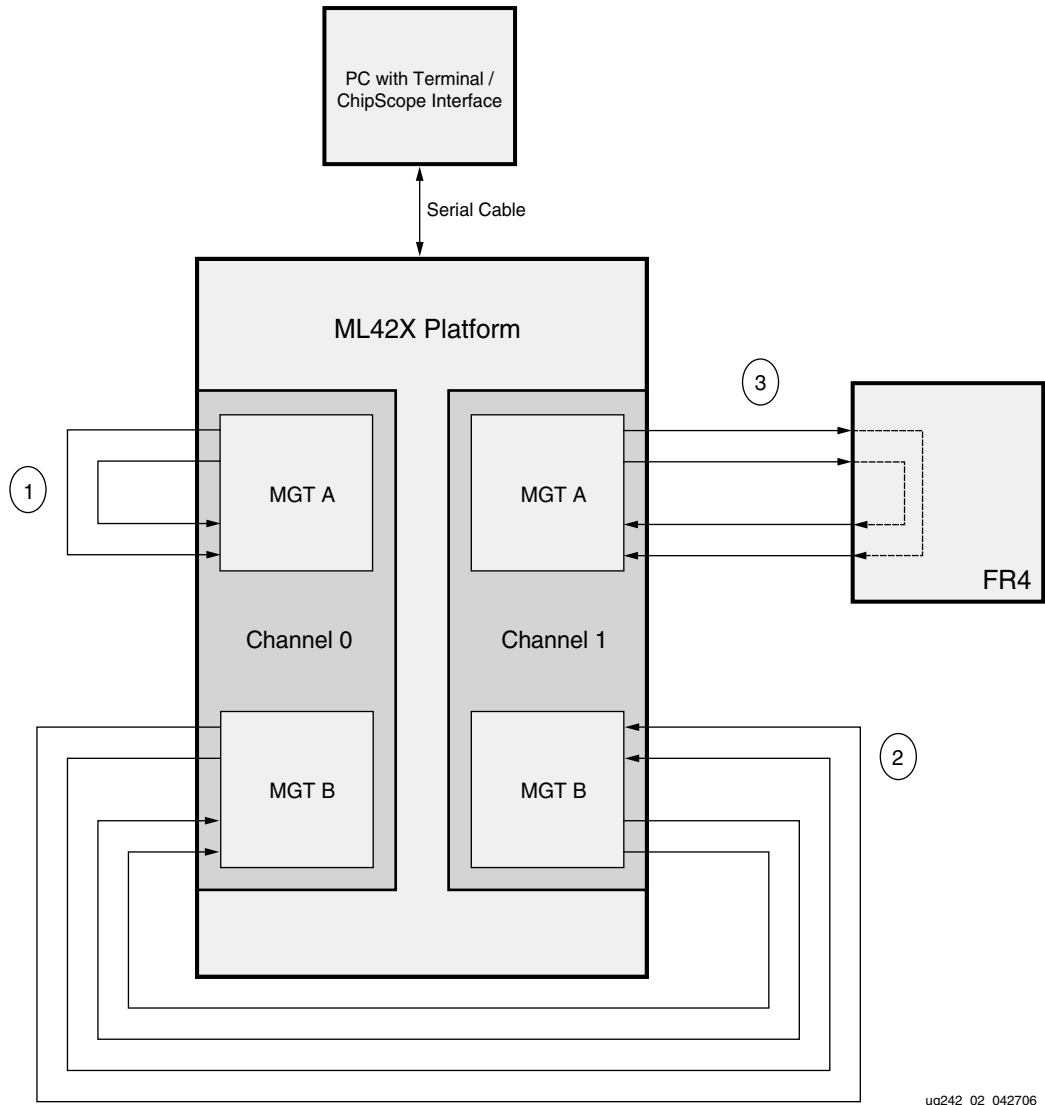
The XBERT reference design provides access to the Dynamic Reconfiguration Port (DRP) on each MGT. Users can dynamically program clock settings (REFCLK select, dividers, etc.), analog settings (TX pre-emphasis, RX equalization, etc.), and perform read-modify-write functions on any MGT attribute .

Test Setups

Synchronous Test Setups

Figure 2 shows three examples of a synchronous test setup using the ML42x platform running the XBERT reference design. This test setup illustrates the following valid connections (not necessarily reflecting a real setup):

1. MGT A in channel 0 is simply connected in an external loopback through coaxial cables.
2. MGT B in both channel 0 and 1 connect to each other through coaxial cables. This requires that these two MGTs operate at the same data rate — that is, based on the same reference clock and internal PMA dividers — and load the same test pattern.
3. MGT A in channel 1 is connected through an FR4 backplane. In this case, adjustment of the PMA TX pre-emphasis and RX equalization settings might be necessary.



ug242_02_042706

Figure 2: An Example of a Synchronous Test Setup

Asynchronous Test Setups

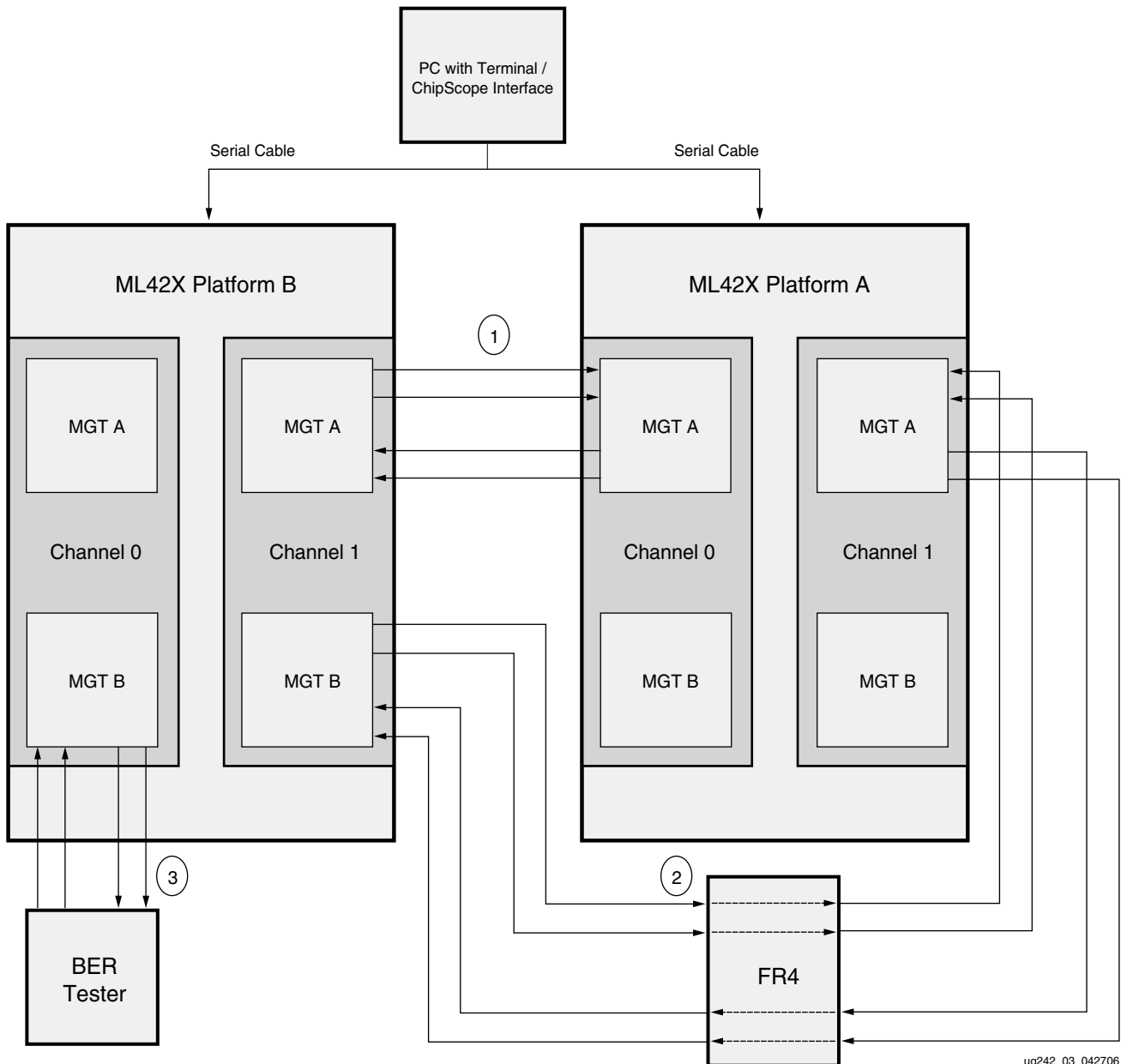
The XBERT reference design uses RXRECCLK from each MGT to drive its associated receiving-side logic. This makes the reference design capable of performing an asynchronous test between two ML42x platforms, or from an ML42x platform to an external BER tester. Figure 3 shows three examples of asynchronous test setups using the ML42x platform running the XBERT reference design. This test setup illustrates the following valid connections (not necessarily reflecting a real setup):

1. Two MGTs on different ML42x platforms are connected to each other through coaxial cables. In this case, MGT A in channel 0 on ML42x platform A and MGT A in channel 1 on ML42x platform B are connected to each other through coaxial cables. This requires that channel 0 on ML42x platform A and channel 1 on ML42x platform B operate at the same data rate and load the same test pattern.
2. Two MGTs on different ML42x platforms are connected to each other through an FR4 backplane. In this case MGT B in channel 1 on ML42x platform B and MGT A in

channel 1 on ML42x platform A are connected to each other through a FR4 backplane. The adjustment of the PMA TX pre-emphasis and RX equalization settings might be necessary in this test setup.

- The MGT B in channel 0 on ML42x platform B is connected to an external BER tester. This requires that channel 0 on ML42x platform B and the BER tester operate at the same data rate and load the same test pattern.

The rest of the MGTs can remain unconnected even though they are enabled in the design.



ug242_03_042706

Figure 3: An Example of Asynchronous Test Setup

Board Setup

System Clock Input

The XBERT reference design uses a 50 MHz clock input along with a digital clock manager (DCM) configured with appropriate multipliers and dividers to generate the PowerPC sub-system clock. In this reference design, the PPC405 processor and its peripherals operate at the system clock input frequency (twice the system clock input frequency or one-half the system clock input frequency).

The system clock is generated from the 2.5V or 3.3V LVTTTL-type, half- or full-sized 50 MHz oscillator placed at the socket X2 on ML42x platform. To enable this clock, place the jumpers as shown in [Table 1](#).

Table 1: Jumper Settings for system clock on ML42x Platform

Board	J25	J24	J21	J20	Socket
ML421	ON	VCC3	N/A	N/A	X2
ML423	ON	VCC3	N/A	N/A	X2
ML424	N/A	N/A	ON	VCC3	X2
ML425	N/A	N/A	ON	VCC3	X2

MGT Location

The XBERT reference design can enable multiple MGTs by incrementing the number of channels implemented in the design. The number of channels enabled for the ML42x platform are listed in [Table 2](#). Each channel contains two MGTs, which should be placed next to each other, MGT A on top of MGT B. Even channels use MGTs at the left column, and odd channels use MGTs at the right column, as seen on the Xilinx FPGA editor.

[Table 2](#) lists the MGTs with their corresponding locations enabled in the demonstration bitstream built for the ML42x platform.

Table 2: MGT Identity and Location on the ML42x Platform

MGT Label	Board / Device Type				
	ML421: XC4VFX20	ML421: XC4VFX40 XC4VFX60 ML423: XC4VFX40	ML423: XC4VFX60	ML423: XC4VFX100 ML424: XC4VFX100	ML424: XC4VFX140 ML425: XC4VFX140
106B			C0	C0	C0
106A			C1	C1	C1
109B			C2	C2	C2
109A			C2	C2	C2
105B	C0	C0	C2	C2	C2
105A	C0	C0	C2	C2	C2

Table 2: MGT Identity and Location on the ML42x Platform (Continued)

MGT Label	Board / Device Type				
	ML421: XC4VFX20	ML421: XC4VFX40 XC4VFX60 ML423: XC4VFX40	ML423: XC4VFX60	ML423: XC4VFX100 ML424: XC4VFX100	ML424: XC4VFX140 ML425: XC4VFX140
110B	C1	C1	C3	C3	C3
110A					
104B					C4
104A					
111B					
111A					C5
103B		C2	C4	C4	C6
103A					
112B		C3	C5	C5	C7
112A					
102B	C2	C4	C6	C6	C8
102A					
113B	C3	C5	C7	C7	C9
113A					
101B				C8	C10
101A					
114B				C9	C11
114A					

C0 indicates channel 0, C1 indicates channel 1, and so on. Unavailable MGTs are grayed out. This is dependent on the device family and the number of MGTs present in that family.

MGT Clock Inputs

The XBERT reference design provides REFCLK1, REFCLK2, and GREFCLK inputs to the MGTs in the left or right columns. The design provides REFCLK1 and REFCLK2 inputs dedicated for the left and right columns. Two MGTCLK modules on the bottom of the board provide REFCLK1 inputs to the MGTs in the left and right columns. Similarly, two MGTCLK modules on the top of the board provide REFCLK2 inputs to the MGTs in left and right columns. The GREFCLK input for the MGTs in the left and right columns comes from a differential pair located on the bottom of the board.

Table 3 lists the REFCLK1, REFCLK2, and GREFCLK locations for the ML42x platform. The left column indicates the placement of MGTs on the left side as seen on the Xilinx FPGA editor. The right column indicates the placement of MGTs on the right side as seen on the Xilinx FPGA editor.

Table 3: MGT Clock Placements on the ML42x Platform

Board	Column	REFCLK1	REFCLK2	GREFCLK
ML421	Left	MGTCLK105	MGTCLK102	AE15/AF15
	Right	MGTCLK110	MGTCLK113	
ML423	Left	MGTCLK105	MGTCLK102	AD20/AD21
	Right	MGTCLK110	MGTCLK113	
ML424	Left	MGTCLK105	MGTCLK102	AP21/AP22
	Right	MGTCLK110	MGTCLK113	
ML425	Left	MGTCLK105	MGTCLK102	AP23/AN23
	Right	MGTCLK110	MGTCLK113	

SMA Cables

The reference design requires one pair of SMA-to-SMA coaxial cables to connect between the transmitter and receiver on a single MGT or multiple pairs of SMA-to-SMA coaxial cables to connect between the transmitter and receiver on more than one MGT. Each pair of cables should be 50Ω high-speed RF cables with minimal length discrepancy and the desired cut-off frequency for the target serial speed. These cables must be properly secured at each SMA connector on ML42x platforms.

RS-232 Port

The XBERT reference design uses its on-board RS-232 port to communicate with a PC through a serial cable. The design can receive control commands and send status through this serial interface. Connect one end of a null-modem (crossover) serial cable to the RS-232 port, and the other end to a DB-9 serial port on a PC. Place the ML42x platform jumper J100 to ON. Refer to “[PC Terminal](#)” for instructions on how to set up the terminal program on a PC.

FPGA Configuration

Bitstream (*.bit) files and System ACE (*.ace) files are provided to configure the FPGA in JTAG mode using one of the following options:

- Xilinx Parallel Cable III
- Xilinx Parallel Cable IV
- Xilinx Platform Cable USB
- System ACE™ configuration controller

The bitstream for the design can be downloaded from <http://www.xilinx.com/bvdocs/appnotes/xapp713.zip>.

Using Parallel Cable III, Parallel Cable IV, or Platform Cable USB

To configure the FPGA through Parallel Cable III or Parallel Cable IV or Platform Cable USB:

1. Choose a bitstream file for the ML42x platform. There are four different bitstreams, one each for 16-bit, 20-bit, 32-bit, or 40-bit data width configurations.

2. Connect the Parallel Cable III/IV or Platform Cable USB to the ML42x platform.
3. Power on the ML42x platform.
4. Start the Xilinx iMPACT program.
The Xilinx ISE 8.1i tool is recommended. The user can also download a bitstream using the Xilinx ChipScope Pro Analyzer.
5. Initialize the Boundary-Scan chain in iMPACT using **File → Initialize Chain**.
6. Assign the bitstream to the device (XC4VFX20, XC4VFX40, XC4VFX60, XC4VFX100, or XC4VFX140).
7. Download the bitstream.
8. The DONE LED (DS2) should light to indicate a successful configuration of the FPGA.

Using a System ACE Controller

To configure the FPGA through the System ACE controller:

1. Ensure the Compact Flash card file structure complies with the structure shown in [Table 4](#).
2. Plug the Compact Flash card containing the System ACE files into the Compact Flash socket.
3. Use the configuration address DIP switches to choose one of the ACE files stored in the Compact Flash memory card. [Table 5](#) lists all the System ACE filenames associated with rev0, rev1, rev2, and rev3 corresponding to 40-bit, 32-bit, 20-bit, and 16-bit data widths respectively. Insert a 30 MHz oscillator in socket X1 (a slower oscillator is acceptable). For more information, refer to *System ACE Compact Flash Solution* [[Ref 4](#)].
4. Place jumper J63 in the ON position.
5. Power on the board. Press the RESET push button (SW4) on System ACE to reset the System ACE controller.
6. The status LED (DS7) should light. Otherwise, press the RESET button again.
7. The DONE LED (DS2) should light to indicate a successful configuration.

Table 4: System ACE Compact Flash File Structure

Target Device	File Structure
ML421	<pre> xilinx.sys xbert __ rev0 __ ml421_xc4vfx20/40/60ff672_40.ace __ rev1 __ ml421_xc4vfx20/40/60ff672_32.ace __ rev2 __ ml421_xc4vfx20/40/60ff672_20.ace __ rev3 __ ml421_xc4vfx20/40/60ff672_16.ace </pre>
ML423	<pre> xilinx.sys xbert __ rev0 __ ml423_xc4vfx40/60/100ff1152_40.ace __ rev1 __ ml423_xc4vfx40/60/100ff1152_32.ace __ rev2 __ ml423_xc4vfx40/60/100ff1152_20.ace __ rev3 __ ml423_xc4vfx40/60/100ff1152_16.ace </pre>
ML424	<pre> xilinx.sys xbert __ rev0 __ ml424_xc4vfx100/140ff1517_40.ace __ rev1 __ ml424_xc4vfx100/140ff1517_32.ace __ rev2 __ ml424_xc4vfx100/140ff1517_20.ace __ rev3 __ ml424_xc4vfx100/140ff1517_16.ace </pre>
ML425	<pre> xilinx.sys xbert __ rev0 __ ml425_xc4vfx140ff1760_40.ace __ rev1 __ ml425_xc4vfx140ff1760_32.ace __ rev2 __ ml425_xc4vfx140ff1760_20.ace __ rev3 __ ml425_xc4vfx140ff1760_16.ace </pre>

Table 5: System ACE Filenames and Target MGT Data Width Configuration

Target Platform	Target Device	System ACE Config Address DIP Switch[2:0] ⁽¹⁾	Filename	Target MGT Data Width Config
ML421	4VFX20 4VFX40 4VFX60	OOO	ml421_xc4vfx20/40/60ff672_40.ace	40
		OOC	ml421_xc4vfx20/40/60ff672_32.ace	32
		OCO	ml421_xc4vfx20/40/60ff672_20.ace	20
		OCC	ml421_xc4vfx20/40/60ff672_16.ace	16
ML423	4VFX40 4VFX60 4VFX100	OOO	ml423_xc4vfx40/60/100ff1152_40.ace	40
		OOC	ml423_xc4vfx40/60/100ff1152_32.ace	32
		OCO	ml423_xc4vfx40/60/100ff1152_20.ace	20
		OCC	ml423_xc4vfx40/60/100ff1152_16.ace	16
ML424	V4FX100 V4FX140	OOO	ml424_xc4vfx100/140ff1517_40.ace	40
		OOC	ml424_xc4vfx100/140ff1517_32.ace	32
		OCO	ml424_xc4vfx100/140ff1517_20.ace	20
		OCC	ml424_xc4vfx100/140ff1517_16.ace	16
ML425	V4FX140	OOO	ml425_xc4vfx140ff1760_40.ace	40
		OOC	ml425_xc4vfx140ff1760_32.ace	32
		OCO	ml425_xc4vfx140ff1760_20.ace	20
		OCC	ml425_xc4vfx140ff1760_16.ace	16

Notes:

1. O = Open, C = Closed

User Push Button

The XBERT reference design uses one active-High user push button (SW1) to issue a system reset on the design. The functions of this reset include:

- Resetting the PPC405 core and its peripherals
- Restarting the XBERT software
- Resetting the XBERT module
- Resetting MGTs in all XBERT channels by asserting TXRESET, RXRESET, TXPMARESET and RXPMARESET on each MGT of every channel

User LEDs

The ML42x platform has 20 user LEDs divided into two rows, Row 2 and Row 1. The XBERT reference design uses several LEDs in each row to display XBERT channel status.

[Table 6](#) and [Table 7](#) describe the action of each LED.

Table 6: User LEDs: LED Row 2

Label	Action and Description	Function Name
DS31	DS31 and DS29 represent the link status of MGTB and MGTA within channel 0.	Link Status for all even channel MGTs on the left column.
DS29		
DS28	DS28 and DS32 represent the link status of MGTB and MGTA within channel 2.	
DS32		
DS33	DS33 and DS34 represent the link status of MGTB and MGTA within channel 4.	
DS34		
DS35	DS35 and DS8 represent the link status of MGTB and MGTA within channel 6.	
DS8		
DS9	DS9 and DS10 represent the link status of MGTB and MGTA within channel 8.	
DS10		

Table 7: User LEDs: LED Row 1

Label	Action and Description	Function Name
DS11	DS11 and DS12 represent the link status of MGTB and MGTA within channel 1.	Link Status for all odd channel MGTs on the right column.
DS12		
DS13	DS13 and DS14 represent the link status of MGTB and MGTA within channel 3.	
DS14		
DS15	DS15 and DS16 represent the link status of MGTB and MGTA within channel 5.	
DS16		
DS17	DS17 and DS18 represent the link status of MGTB and MGTA within channel 7.	
DS18		
DS19	DS19 and DS20 represent the link status of MGTB and MGTA within channel 9.	
DS20		

Note: The validity of link status LEDs is dependent on the number of channels implemented in the design. For a four-channel design, only the channel 0, 1, 2, and 3 link status LEDs are valid.

MGT Clock Outputs

The XBERT reference design provides TXOUTCLK1, TXOUTCLK2, RXRECCLK1, and RXRECCLK2 outputs for all MGTs within channel 0 and 1. The ML42x platform pin locations of these outputs are listed in [Table 8](#) through [Table 11](#). All clock outputs are presented on J13 of the ML42x platform.

Table 8: TXOUTCLK and RXRECCLK Outputs on ML421

Channel	MGT	TXOUTCLK1	RXRECCLK1	TXOUTCLK2	RXRECCLK2
0	A	AA15	AB15	AC17	AD18
	B	AC16	AD16	AD19	AD20
1	A	AC22	AC23	AC24	AB24
	B	AD23	AD24	AA23	AA24

Table 9: TXOUTCLK and RXRECCLK Outputs on ML423

Channel	MGT	TXOUTCLK1	RXRECCLK1	TXOUTCLK2	RXRECCLK2
0	A	AL18	AL19	AL23	AM23
	B	AM21	AM22	AM25	AL25
1	A	AM26	AL26	AJ27	AH27
	B	AJ25	AJ26	AF28	AE28

Table 10: TXOUTCLK and RXRECCLK Outputs on ML424

Channel	MGT	TXOUTCLK1	RXRECCLK1	TXOUTCLK2	RXRECCLK2
0	A	AR24	AT24	AM26	AM27
	B	AP26	AR26	AT29	AR29
1	A	AU30	AT30	AU31	AT31
	B	AL29	AK29	AN32	AM32

Table 11: TXOUTCLK and RXRECCLK outputs on ML425

Channel	MGT	TXOUTCLK1	RXRECCLK1	TXOUTCLK2	RXRECCLK2
0	A	AK30	AJ30	AL31	AM31
	B	AV26	AW26	AR29	AR30
1	A	AV29	AV30	AT30	AT31
	B	AW30	AY30	AU31	AU32

In addition to the clock outputs shown above, the XBERT reference design also provides GREFCLK and SYSCLK on the header pins. GREFCLK is the low-speed MGT input clock for channel 0 and SYSCLK is the 50 MHz system clock input. The GREFCLK and SYSCLK header pin locations for the ML42x platform are shown in [Table 12](#).

Table 12: GREFCLK and SYSCLK Header Pins on ML42x Platform

Board	GREFCLK	SYSCLK
ML421	T18	U19
ML423	AC22	AC23
ML424	AT25	AU25
ML425	AV23	AV24

PC Terminal

Terminal Programs

This section covers the use of terminal programs such as Tera Term Pro and HyperTerminal. The ML42x Development Platform uses a terminal program to communicate serially with the OS running on the PPC405.

Two free terminal programs are available:

- **HyperTerminal**

This program is included with the Windows operating system. Setup instructions for HyperTerminal are not included in this document.

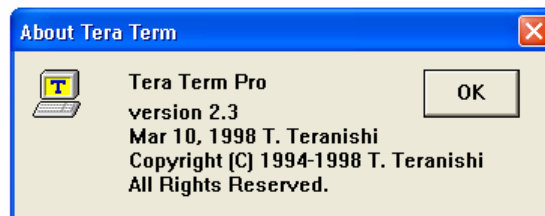
- **Tera Term Pro**

Tera Term Pro is more flexible than HyperTerminal, and is recommended. Setup and use instructions for Tera Term Pro are included in the following section beginning with [Figure 4](#).

For more information on Tera Term Pro and to download it, see:

<http://hp.vector.co.jp/authors/VA002416/teraterm.html>.

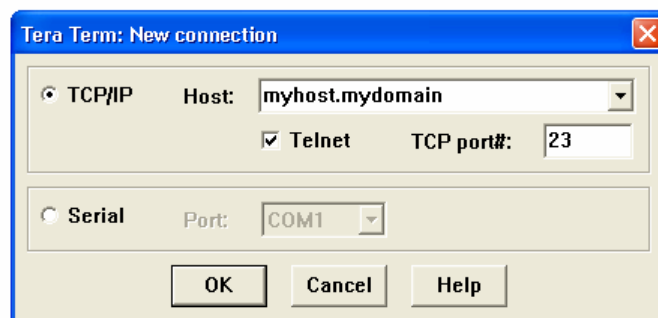
Tera Term Pro Setup



ug242_04_042706

Figure 4: Tera Term Pro “About” Screen

Figure 5 shows the default startup mode for the Tera Term Pro software.



ug242_05_042706

Figure 5: Tera Term New Connection Default Window

1. Select the serial port to which your cable is connected. See [Figure 6](#).

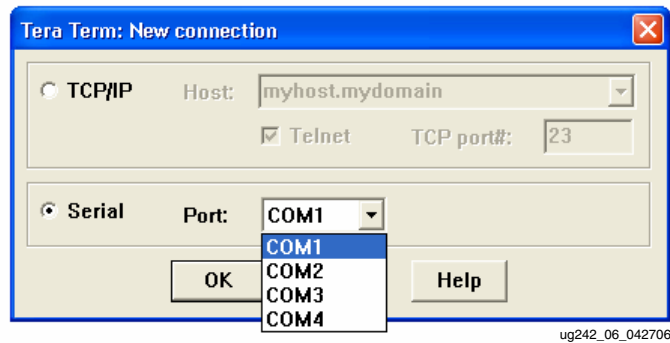


Figure 6: Selecting the Serial Port Connection

2. Select **Setup** → **Serial Port** to set the speed to 38400 baud. See [Figure 7](#).

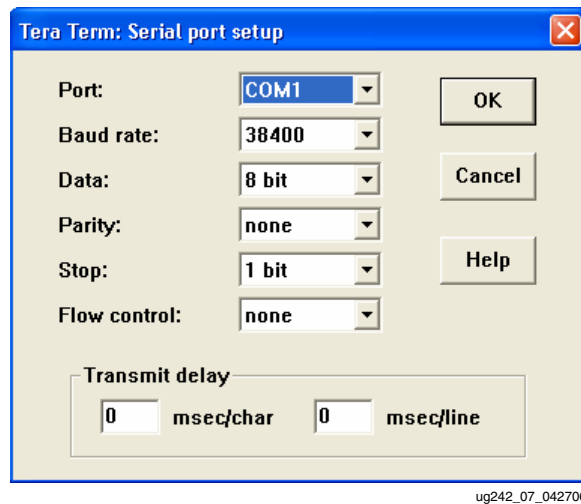


Figure 7: Selecting the Baud Rate

3. 3) Select **Setup** → **Terminal** to increase the size of the terminal window. See [Figure 8](#).

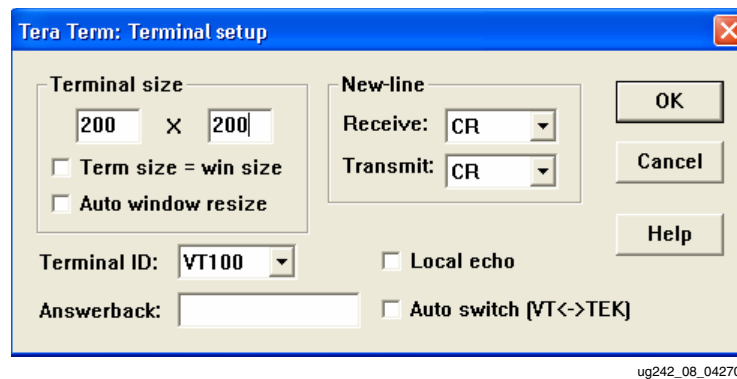


Figure 8: Increasing Terminal Window Size

The recommended setting for the terminal window size is 200x200.

4. Select **Setup** → **Window** to increase the scroll buffer size (to view more lines) if desired. See [Figure 9](#).

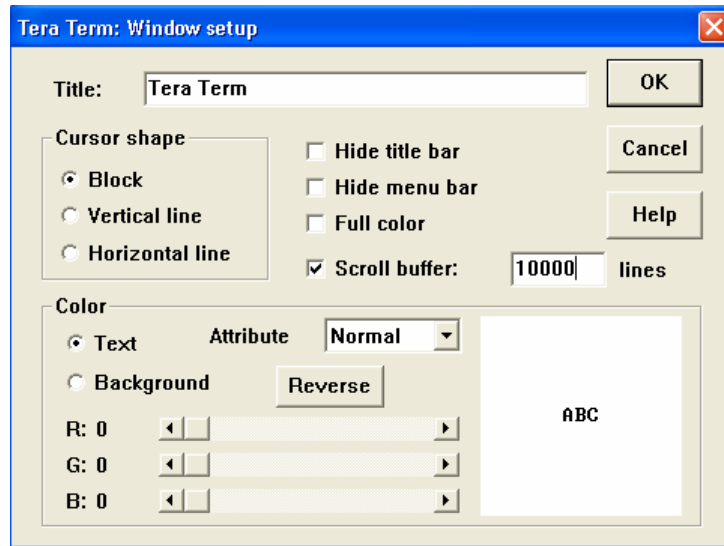


Figure 9: Increasing the Scroll Buffer

5. Select **Setup** → **Save Setup** to save the terminal window setup.

XBERT Operation

Figure 10 shows the software operation flow diagram of the XBERT reference design.

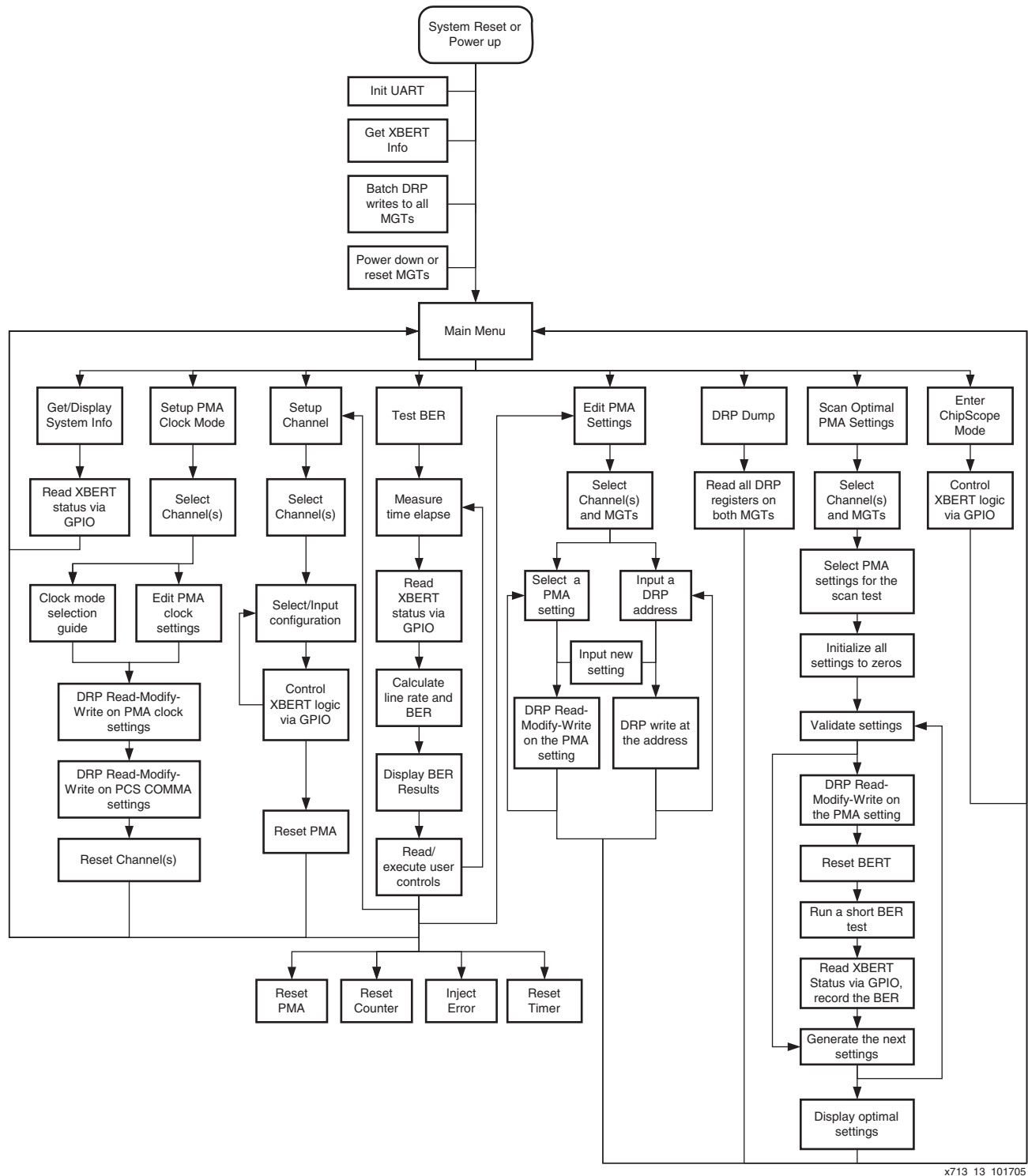


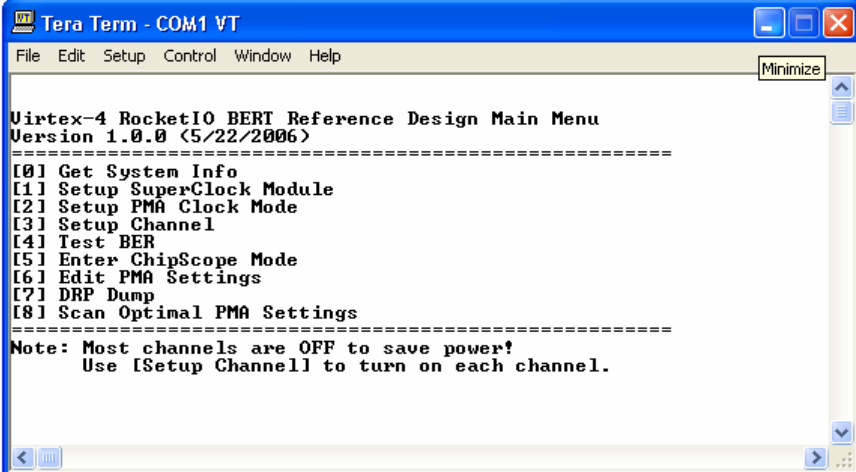
Figure 10: Software Operation Flow Diagram

x713_13_101705

Main Menu Screen

The main menu appears after the board is powered up or the system is reset. [Figure 11](#) shows the main menu. It displays the version number and build date of the XBERT reference design. The main menu provides a list of software options:

- [0] Get System Info
- [1] Setup SuperClock Module
- [2] Setup PMA Clock Mode
- [3] Setup Channel
- [4] Test BER
- [5] Enter ChipScope Mode
- [6] Edit PMA Settings
- [7] DRP Dump
- [8] Scan Optimal PMA Settings



```
Tera Term - COM1 VT
File Edit Setup Control Window Help
-----
Virtex-4 RocketIO BERT Reference Design Main Menu
Version 1.0.0 (5/22/2006)
-----
[0] Get System Info
[1] Setup SuperClock Module
[2] Setup PMA Clock Mode
[3] Setup Channel
[4] Test BER
[5] Enter ChipScope Mode
[6] Edit PMA Settings
[7] DRP Dump
[8] Scan Optimal PMA Settings
-----
Note: Most channels are OFF to save power!
      Use [Setup Channel] to turn on each channel.
-----
```

ug242_11_052306

Figure 11: Main Menu

[0] Get System Info

To display the system info shown in [Figure 12](#), select **[0]** from the main menu. The hardware configurations for the XBERT reference design include:

- Device type and Calibration Block version.
- Total number of MGTs available on the target device.
- Total number of enabled MGTs in the design. This number should be twice the number of channels in the design.
- Total number of channels in the design.
- Data width of the MGT fabric interface used in the design.
- 8B/10B support, Left/Right TX clock master channels, and SuperClock Module control.

- Silkscreen labels of all enabled MGTs on the ML42x platform, listed with associated channel numbers. See [Table 2, page 11](#) for a list of ML42x platform silkscreen labels.

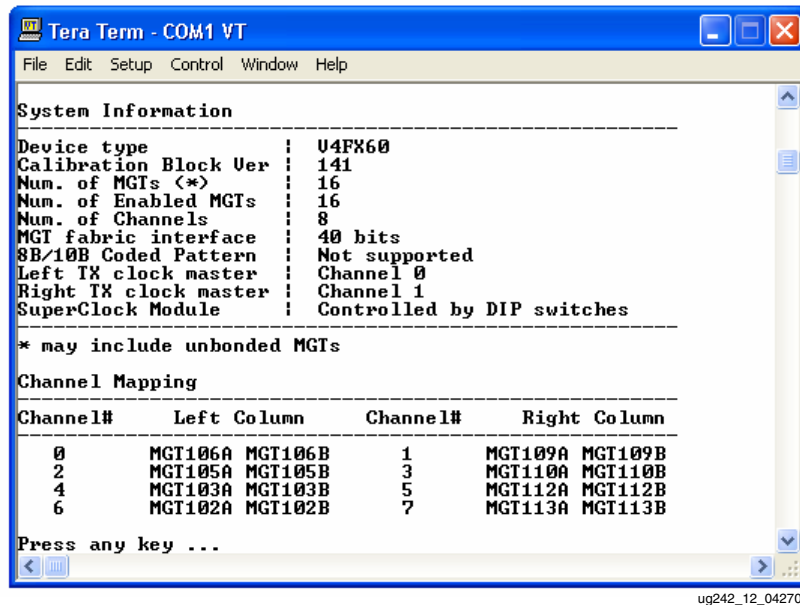


Figure 12: Get System Info

[1] Setup SuperClock Module

To set up the SuperClock Module, select **[1]** from the main menu. The SuperClock module can be controlled either through DIP switches or FPGA/XBERT. The user can input **[1]** to change the control source, **[2]** to change the XTAL0 frequency and **[3]** to change the XTAL1 frequency. Pressing **[Esc]** returns to main menu. The SuperClock Module setup is shown in [Figure 13](#).

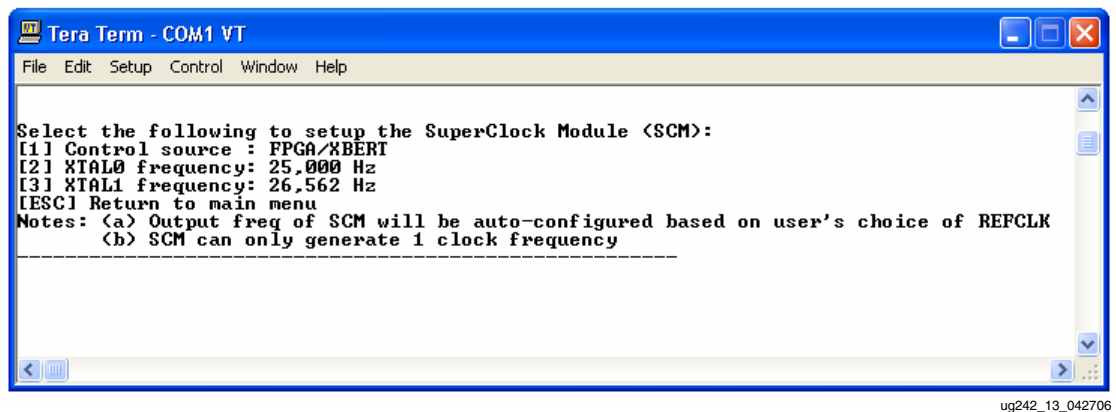


Figure 13: SuperClock Module Setup

If XBERT is used to control the SuperClock module, the DIP switches on the SuperClock module should be set open.

[2] Setup PMA Clock Mode

To set up the PMA clock settings, select **[2]** from the main menu. Then, select the channels to be targeted by choosing one of the following:

- Press **[77]** to target all channels on the left column.
- Press **[88]** to target all channels on the right column.
- Press **[99]** to target all channels in the design.

After selecting the channel, choose one of the following:

- Press **[1]** for clock mode selection guide.
- Press **[2]** to edit individual clock attribute.
- Press **[Esc]** to return to the main menu.

If the channels are not powered up, a message is displayed to power up the channels before selecting the clock settings (shown in [Figure 14](#)).

Clock Mode Selection Guide

[Figure 14](#) shows the clock mode selection guide window accessed by selecting the channel and pressing **[1]**. The user must then input the device type, reference clock type, line rate, and clock frequency. The software sets the proper clocking attributes after processing the user inputs and then displays a summary of these settings on the terminal window. (The SuperClock module is configured to generate the clock frequency desired if the SuperClock module control was chosen to be FPGA/XBERT.)

Example: To set up a system at 3.125 Gb/s using REFCLK1 at 156 MHz and targeting the left-column channels on a Virtex-4 FX CES4 device, type the commands listed in [Table 13](#) and highlighted in [Figure 14](#).

Table 13: User Commands for an Example System

Command	Description
[2]	Press 2 from the main menu to enter Setup PMA Clock Mode
[77]	Press [77] to target left column channels
[1]	Press [1] to enter Clock mode selection guide
[1]	Press [1] to choose V4FX CES4 device
[1]	Press [1] to choose REFCLK1
[3125]	Enter [3125] as the target line rate in Mb/s.
[3]	Press [3] to choose RECFLK1 rate to be 156 Mhz.

```

Tera Term - COM1 VT
File Edit Setup Control Window Help
Which channel to setup (<[77] Left column [88] Right column [99] All channels>):??
Select one of the following:
[1] Clock mode selection guide
[2] Edit PMA clock settings
[ESC] Return to main menu
-----
Note: Most channels are OFF to save power!
      Use [Setup Channel] to turn on each channel.
1
Which PPGA device are you using:
[1] - U4FX CES4
[2] - U4FX CES2/CES3
1
Which reference clock to use on MGIs:
[1] - REFCLK1 (MGTCLK105/110 at bottom)
[2] - REFCLK2 (MGTCLK102/113 at top)
[3] - GREFCLK
1
Input the target line rate in Mbps (Range 622 to 10,313):
3125
Select your desired REFCLK/GREFCLK frequency:
[0] - 390 (Best Choice)
[1] - 312
[2] - 195
[3] - 156
[4] - 97
[5] - 78 (Worst Choice)
3
Summary of clocking settings:
Line   Rate : 3,125
Tx UCO Rate : 3,125
Rx UCO Rate : 3,125
REFCLK Rate : 156
Note: SuperClock module is configured to generate 156 MHz clock
      The configuration vector is set to 0x021B
Updated PMA Clock Settings:
Note: These values are DRP settings in HEX that may not match the values as in UC
#   Attribute                               Value
-----
[00] TXOUTCLK1_USE_SYNC                     0x00

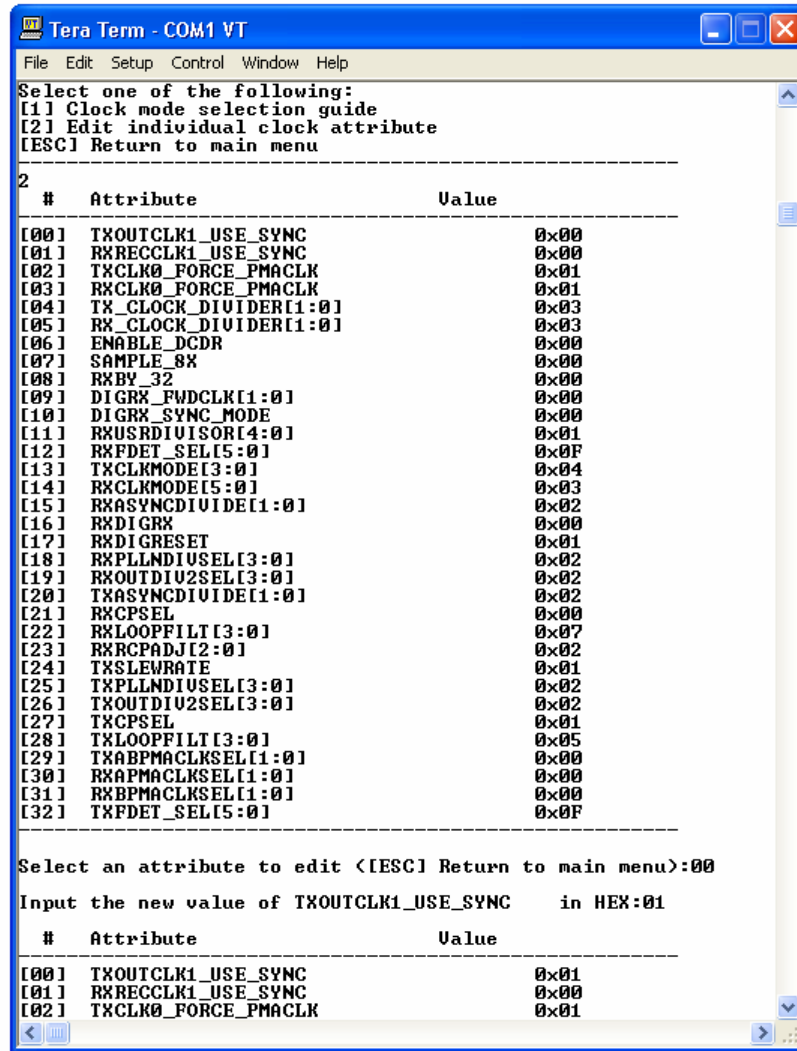
```

ug242_14_042706

Figure 14: Clock Mode Selection Window

Edit Individual Clock Attribute

Figure 15 shows the edit individual clock attribute window accessed by selecting the channel and pressing [2]. Any of the clocking attributes displayed on the terminal window can be edited. To edit an attribute, input the index number of the attribute (in this case, 00) and the new value for this attribute (01). The software then writes this new value into the selected attribute and updates the table with the new value, as shown in Figure 15.



ug242_15_042706

Figure 15: Edit Individual Clocking Attribute Window

Caution! The Edit Clocking Attribute function is for advanced users only. Use this function only after attaining a thorough understanding of the implications of the edits. Refer to *Virtex-4 RocketIO MGT User Guide* [Ref 2] for a detailed description of the clocking attributes.

[3] Setup Channel

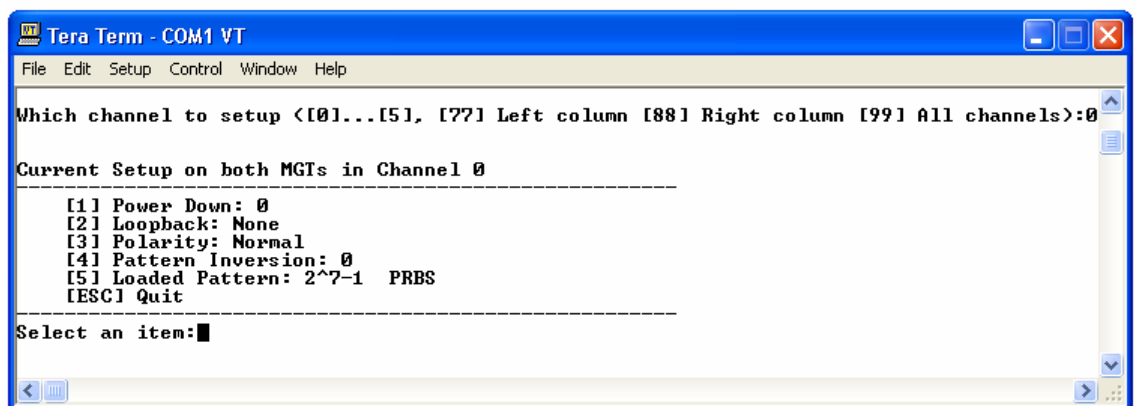
To set up an XBERT channel, select **[3]** from the main menu, or press **[S]** on the BER test console (see “[4] Test BER”). [Figure 16](#) and [Figure 17](#) show the Setup Channel (Short List) and Setup Channel (Full List) windows respectively.

Note: The settings made on any channel affects both MGTs (MGT A and B) in that channel except for polarity, where the user has control over which MGT the polarity needs to be changed.

As Shown in [Figure 16](#), do one of the following to select the channel:

1. Input a channel number to target a specific channel.
2. Press **[77]** to target all channels on the left column.
3. Press **[88]** to target all channels on the right column.
4. Press **[99]** to target all channels in the design.

The terminal displays the list of settings and its current value for the selected channel or channel 0 if **[77]** or **[99]** was chosen, or channel 1 if **[88]** was chosen. If the current loaded pattern on the selected channel is the framed counter pattern, two more settings (Frame Length and Inter-Frame Gap) are provided in the list as shown in [Figure 17](#). The user can chose a setting from the list of settings to be configured on a specific channel or a set of channels. These settings are further described below:



ug242_16_042706

Figure 16: Setup Channel (Short List)



ug242_17_042706

Figure 17: Setup Channel (Full List Including Frame Length and Inter-Frame Gap)

[1] Powerdown

Select **[1]** from the channel setup menu to power down or power up both MGTs in the selected channel.

Note: The XBERT reference design uses TXOUTCLK from an MGT in channel 0 or 1 to generate the USRCLKs for all MGTs in the left or right columns. Therefore, to operate MGTs in the left or right columns, channel 0 or 1 must always be powered up and must not be powered down.

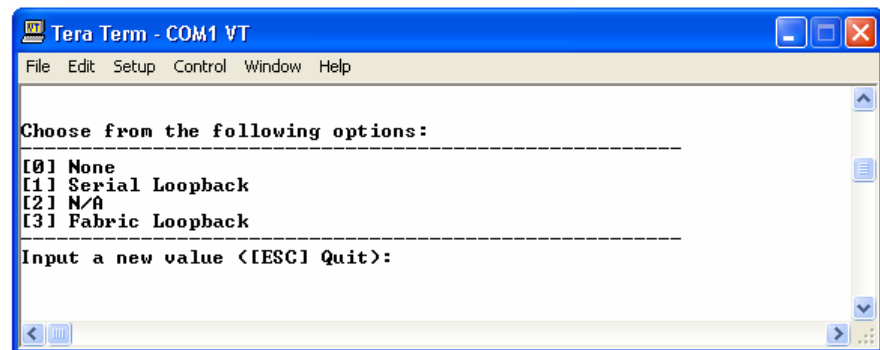
[2] Loopback

Select **[2]** from the channel setup menu to view a list of loopback options as shown in Figure 18. The user can choose from the following options:

[0] None: Deactivates any loopback mode on both MGTs in the selected channel.

[1] Serial Loopback: Activates the serial loopback mode for both MGTs in the selected channel. This requires termination of TXN/TXP for proper operation. Refer to *Virtex-4 RocketIO MGT User Guide* [Ref 2] for details on this loopback mode.

[3] Fabric Loopback: Fabric loopback causes the receive data at the fabric interface to be looped back to the transmit data.



ug242_18_042706

Figure 18: Setup Loopback Mode

[3] Polarity

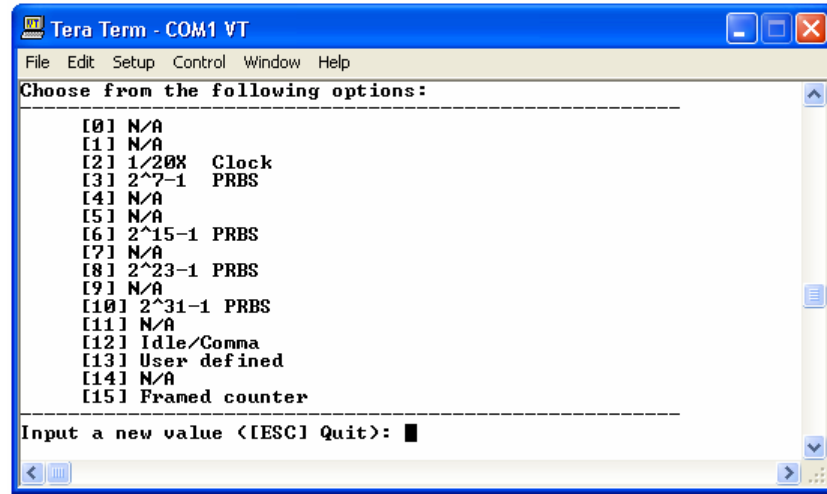
Select **[3]** from the channel setup menu to change the polarity for the selected channel. The user can choose to invert the TX polarity or RX polarity, invert both TX and RX polarity, or resume normal polarity for either MGT A or B in the selected channel. (Changing the TX/RX polarity has no effect if the MGT operates in parallel loopback mode.)

[4] Pattern Inversion

Select **[4]** from the channel setup menu to invert the pattern for the selected channel. The user can invert or revert the generated pattern from the pattern generator for the selected channel. The PRBS patterns $2^{15} - 1$, $2^{23} - 1$, $2^{29} - 1$, and $2^{31} - 1$ are specified as inverted patterns by default in the ITU-T O.150 specification; therefore, the XBERT reference design inverts these patterns, but allows the user to invert them back in order to link up with a non-standard external BER tester.

[5] Loaded Pattern

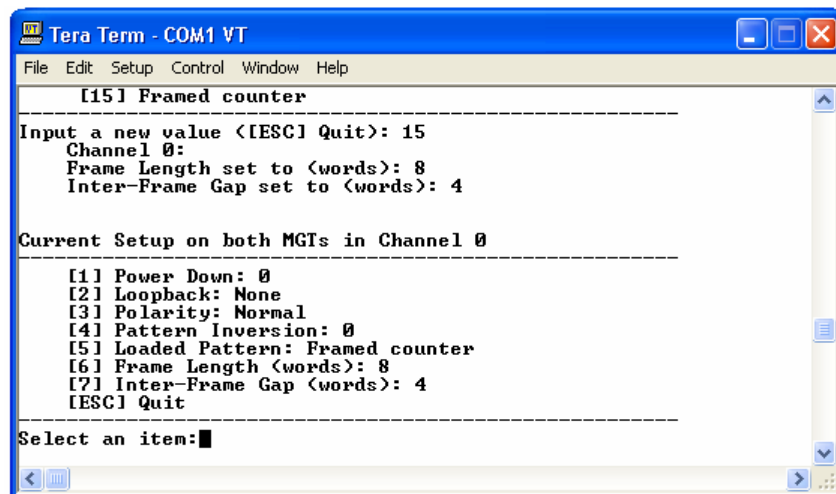
Select **[5]** from the channel setup menu to display a list of supported patterns for the design, as shown in [Figure 19](#). Refer to “[Pattern Selection](#)” for a detailed description of these patterns.



ug242_19_042706

Figure 19: Select a Pattern

[Figure 20](#) shows the screen capture when the framed counter pattern is selected. If the framed counter pattern is selected, the frame length and inter-frame gap are automatically set to eight and four words respectively. These settings can be edited through the terminal window.



ug242_20_042706

Figure 20: Framed Counter Pattern

[6] Frame Length

This setting is enabled only if the framed counter pattern is chosen on the selected channel. After selecting **[6]** from the channel setup menu, the length of the framed counter pattern can be specified. The counter pattern is delimited by Inter-Frame Gaps (IFGs), which

contain only K28.5 +/- characters. The length of a frame count begins at the starting word of the counter pattern following an IFG and ends with the last word of the counter pattern prior to the next IFG. A word is either a 16-bit, 20-bit, 32-bit, or 40-bit vector determined by the data width of the MGT fabric interface. The minimum frame length is 4 words, and the maximum frame length is 65,535 words.

[7] Inter-Frame Gap

This setting is enabled only if the framed counter pattern is chosen on the selected channel. After selecting [7] from the channel setup menu, the length of the counter pattern's Inter-Frame Gap (IFG) can be specified. The IFG consists of K28.5 +/- characters only. The length of the IFG begins with the starting word of an IFG, and ends with the last word within the same IFG. A word is either a 16-bit, 20-bit, 32-bit, or 40-bit vector that is determined by the data width of the MGT fabric interface. The minimum IFG length is 4 words, and the maximum IFG length is 255 words.

[4] Test BER

To test the Bit Error Rate (BER) of each MGT, select [4] from the main menu. The BER test console shown in Figure 21 displays general and channel status during the BER test, and reads/executes user commands on one channel or on a set of channels. The status information on the terminal is updated approximately once every second by the PPC405 processor. Counter numbers (Rx Words #, Bit Errors #) are captured in real time in the FPGA fabric logic.

```

8-Channel BER Test Console (Device:V4FX60)                               T=6'36" (IC) clear
=====
Channel 0 | MGT106A | MGT106B | Channel 1 | MGT109A | MGT109B
-----
Pattern | Framed counter | 0 | Pattern | 2^31-1 PRBS | 1
Link Status | 1 | 0 | Link Status | 1 | 1
Comma Aligned | 1 | 1 | Comma Aligned | 0 | 0
Tx PMA Locked | 1 | 1 | Tx PMA Locked | 1 | 1
Rx PMA Locked | 1 | 0 | Rx PMA Locked | 1 | 1
Line Rate | 03125 Mbps | 03990 Mbps | Line Rate | 03125 Mbps | 03125 Mbps
Rx Words # | 0x00000000_777ACD47 | 0x00000000_98896DF6 | Rx Words # | 0x00000000_777C67B3 | 0x00000000_777D3292
Bit Errors # | 0x00000000_00000000 | 0x00000000_A2621A50 | Bit Errors # | 0x00000000_00000000 | 0x00000000_00000000
Bit Err Rate | 1.24E-11 | 2.66E-02 | Bit Err Rate | 1.24E-11 | 1.24E-11
Controls | [0] Inject Tx Error | | Controls | [1] Inject Tx Error | |
=====
Channel 2 | MGT105A | MGT105B | Channel 3 | MGT110A | MGT110B
-----
Pattern | 2^7-1 PRBS | 1 | Pattern | 2^31-1 PRBS | 1
Link Status | 1 | 0 | Link Status | 1 | 1
Comma Aligned | 1 | 1 | Comma Aligned | 0 | 0
Tx PMA Locked | 1 | 1 | Tx PMA Locked | 1 | 1
Rx PMA Locked | 1 | 1 | Rx PMA Locked | 1 | 1
Line Rate | 03125 Mbps | 03125 Mbps | Line Rate | 03125 Mbps | 03125 Mbps
Rx Words # | 0x00000000_777E65E8 | 0x00000000_777F30F7 | Rx Words # | 0x00000000_77806480 | 0x00000000_77812F7E
Bit Errors # | 0x00000000_00000000 | 0x00000000_00000000 | Bit Errors # | 0x00000000_00000000 | 0x00000000_00000000
Bit Err Rate | 1.24E-11 | 1.24E-11 | Bit Err Rate | 1.24E-11 | 1.24E-11
Controls | [2] Inject Tx Error | | Controls | [3] Inject Tx Error | |
=====
Channel 4 | MGT103A | MGT103B | Channel 5 | MGT112A | MGT112B
-----
Pattern | 2^7-1 PRBS | 1 | Pattern | 2^31-1 PRBS | 1
Link Status | 1 | 0 | Link Status | 1 | 1
Comma Aligned | 1 | 1 | Comma Aligned | 0 | 0
Tx PMA Locked | 1 | 1 | Tx PMA Locked | 1 | 1
Rx PMA Locked | 1 | 1 | Rx PMA Locked | 1 | 1
Line Rate | 03125 Mbps | 03125 Mbps | Line Rate | 03125 Mbps | 03125 Mbps
Rx Words # | 0x00000000_778262A6 | 0x00000000_77832E00 | Rx Words # | 0x00000000_77846270 | 0x00000000_77852D7E
Bit Errors # | 0x00000000_00000000 | 0x00000000_00000000 | Bit Errors # | 0x00000000_00000000 | 0x00000000_00000000
Bit Err Rate | 1.24E-11 | 1.24E-11 | Bit Err Rate | 1.24E-11 | 1.24E-11
Controls | [4] Inject Tx Error | | Controls | [5] Inject Tx Error | |
=====
Channel 6 | MGT102A | MGT102B | Channel 7 | MGT113A | MGT113B
-----
Pattern | 2^7-1 PRBS | 1 | Pattern | 2^31-1 PRBS | 1
Link Status | 1 | 0 | Link Status | 1 | 1
Comma Aligned | 1 | 1 | Comma Aligned | 0 | 0
Tx PMA Locked | 1 | 1 | Tx PMA Locked | 1 | 1
Rx PMA Locked | 1 | 1 | Rx PMA Locked | 1 | 1
Line Rate | 03125 Mbps | 03125 Mbps | Line Rate | 03125 Mbps | 03125 Mbps
Rx Words # | 0x00000000_778660EE | 0x00000000_77872BDD | Rx Words # | 0x00000000_778869B0 | 0x00000000_7788CC9E
Bit Errors # | 0x00000000_00000000 | 0x00000000_00000000 | Bit Errors # | 0x00000000_13968492 | 0x00000000_00000000
Bit Err Rate | 1.24E-11 | 1.24E-11 | Bit Err Rate | 4.89E-03 | 1.24E-11
Controls | [6] Inject Tx Error | | Controls | [7] Inject Tx Error | |
=====
[LW] PMA Reset [RJ] Reset Counters [S] Setup Channel [E] Edit PMA Settings [ESC] Return to main menu
                                                                                               ug242_21_042706
    
```

Figure 21: BER Test Console

General status items displayed on the BER test console include:

- The total number of channels.
- The target device: V4FX20 or V4FX40 or V4FX60 or V4FX100 or V4FX140.

- The elapsed time of the BER test in minutes and seconds, measured using a software timer. The timer continues to count and restarts only on a system reset or by pressing [C] on the BER console.

Note: The timer pauses if the user selects to return to the main menu. The timer continues to run if the user performs channel setup or edits PMA settings from the BER test console by pressing [S] or [E].

Channel status items displayed on the BER test console include:

- *Channel Number:* 0, 1... etc.
- *MGT labels:* Displays the MGT silkscreen labels of two MGTs in each channel. The left column channels are displayed on the left side, and right column channels are displayed on the right side.
- *Pattern:* Displays the pattern type implemented in that channel. The two MGTs in each channel load the same pattern because the pattern generator is shared by these MGTs. Refer to “[Pattern Selection](#)” for a detailed description of these patterns.
- *Link Status:* Displays the link status of two MGTs in a channel.
 - 1 indicates a link is established on the MGT.
 - 0 indicates a link is down on the MGT.

The XBERT reference design declares the link status by counting bit errors in the received data. If the received data contains seven or more consecutive words, each having one or more bit errors, the link is declared down. If the received data contains seven or more consecutive words with error free, the link is declared up. The link status remains unchanged for all other conditions.

- *Comma Aligned:* Displays the comma alignment status of two MGTs in a channel.
 - 1 indicates the comma alignment is achieved on the MGT.
 - 0 indicates the comma alignment is disabled or in progress.

Comma alignment is only enabled when the user chooses the framed counter pattern. A comma is either a K28.5+ or K28.5- character transmitted in the IFG of a framed counter pattern. Comma alignment is a prerequisite to establishing a link using the framed counter pattern.

- *Tx PMA Locked:* Displays the Tx PMA lock status of two MGTs in a channel.
 - 1 indicates the Tx PMA has achieved lock.
 - 0 indicates the Tx PMA has not locked.
- *Rx PMA Locked:* Displays the Rx PMA lock status of two MGTs in a channel.
 - 1 indicates the Rx PMA has achieved lock.
 - 0 indicates the Rx PMA has not locked.
- *Line Rate:* Displays the MGT serial data rate.

This rate is calculated in real time using the Rx Words # and the software timer.
- *Rx Words #:* Displays the number (in hexadecimal) of words received by the MGT since the completion of a system reset or a counter reset. Each word is either a 16,20,32 or 40-bit vector. This number is a 64-bit value that wraps around when it exceeds 18,446,744,073,709,551,615. This would take approximately 2,339 years on a 40-bit MGT fabric interface at 10 Gb/s serial data rate. Therefore, the BER testing could be run for a very long period of time without the counters wrapping around.
- *Bit Errors #:* Displays the number of bit errors (hexadecimal) in the MGT received data after the completion of a system reset or a counter reset. This number is a 64-bit value

that never wraps around in a lifetime. (This number is only trustworthy when the link is up.)

- *Bit Error Rate*: Displays the current MGT bit error rate (BER) in scientific format.

This BER is calculated based on the counter numbers (Rx Words # and Bit Errors #) using the following formula. The BER is only trustworthy when the link is up.

$$\text{Bit Error Rate} = \frac{\text{Bit Errors \#} + 1}{\text{Rx Words \#} * \text{BITS_PER_WORD} + 1}$$

Note: The BER calculation is based on the assumption that the next received bit is an error. This hypothetical erroneous bit is taken into account in the BER calculation, so that the BER starts not from 0, but from 1. It continues to decrease as the BER test runs and the Rx Words # parameter grows larger.

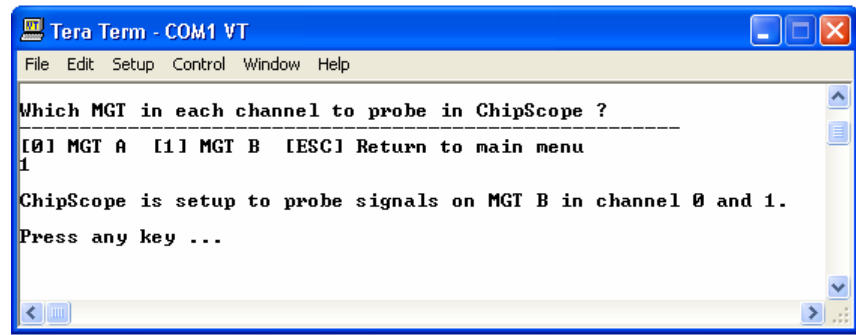
Control commands on the BER test console are listed in [Table 14](#).

Table 14: Control Commands on the BER Test Console

Command Key	Description
[S] or [s]	Displays the channel setup menu. Return to the BER test console after channel setup is done. Refer to “[3] Setup Channel.”.
[E] or [e]	Displays the PMA settings edit menu. Return to the BER test console after PMA attribute edit is done. Refer to “[6] Edit PMA Settings.”
[C] or [c]	Resets the timer that measures BER test elapsed time.
[Esc]	Goes back to the main menu.
[W] or [w]	Resets the PMA. This is recommended when any of the PMA settings are changed.
[R] or [r]	Resets the BER counters (Rx Words #, Bit Errors #, Bit Error Rate).
[0] ... [(Number of Channels – 1)]	Injects a single bit error on the channel selected. [0] injects a bit error on channel 0, [1] injects a bit error on channel 1, and so on.

[5] Enter ChipScope Mode

To use the ChipScope Pro Analyzer to monitor MGT data, select **[5]** from the main menu. The XBERT reference design embeds one ChipScope ILA core for either MGT A or B in channel 0 and 1; therefore, a multiplexer is implemented to pass data from the selected MGT to the ILA core. In ChipScope mode, the selection on the multiplexers in channels 0 and 1 is determined and fixed by the user input. As shown in [Figure 22](#), the user must select either MGT A or MGT B in channels 0 and 1. Then the ChipScope Pro Analyzer is invoked to observe the MGT data.



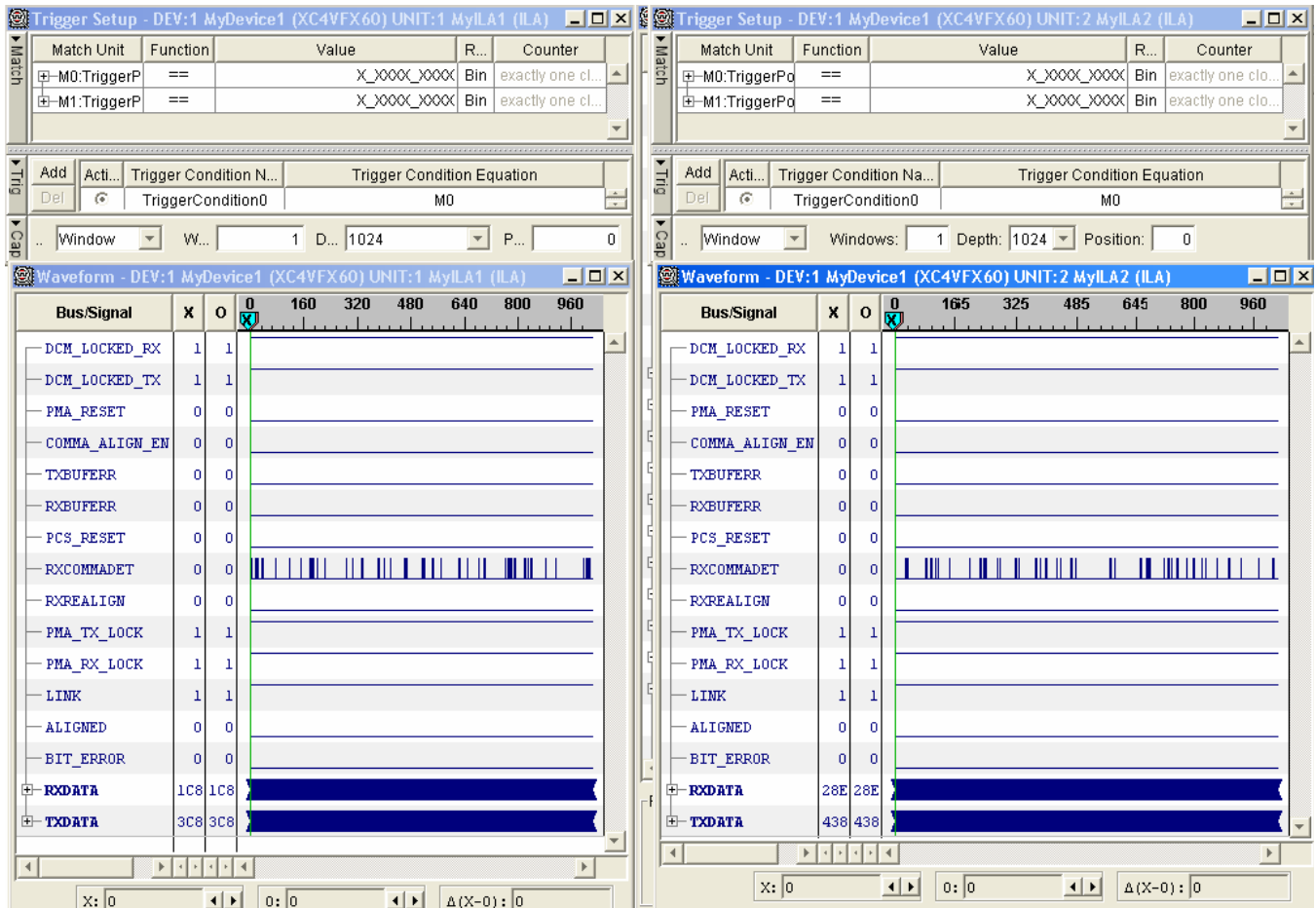
ug242_22_042706

Figure 22: ChipScope Pro Setup

Caution! Pay attention to the warning message on the terminal to see if the ChipScope ILA core operates over its speed limit. The embedded ChipScope ILA cores can run only up to a certain speed, which is limited by the speed performance of the ILA core in the FPGA fabric. Above this speed limit, the data captured in the ChipScope ILA core becomes metastable and inaccurate, although the XBERT design still operates properly.

After opening the ChipScope Pro Analyzer tool, the ChipScope project file (v4 .cpj) provided with the XBERT reference design can be loaded.

Figure 23 shows the ChipScope Pro Analyzer running the XBERT bitstream on the ML421 platform. Each unit in the ChipScope Pro Analyzer corresponds to one channel. Table 15 lists all the data ports for all the units/channels, and Table 16 lists all the trigger ports for all the units/channels in the ChipScope Pro Analyzer.



ug242_23_042706

Figure 23: ChipScope Pro Analyzer Window

Table 15: List of Data Ports in ChipScope Pro Analyzer

Data Port Bit(s)	Signal Name	Description
39:00	txdata	40-bit fabric data that is transmitted.
79:40	rxdata	40-bit fabric data that is received.
80	dcm_locked_rx	Receiver DCM lock status if DCM implemented. Otherwise it goes High after 7 RXUSRCLK2 cycles.
81	dcm_locked_tx	Transmitter DCM lock status if DCM implemented. Otherwise it goes High after 7 TXUSRCLK2 cycles.
82	pma_reset	Value of RXPMARESET, TXPMARESET ports of the MGT.
83	en_comma_align	Value of ENMCOMMAALIGN and ENPCOMMAALIGN ports of the MGT.
84	gt_error[0]	TX buffer error status.
85	gt_error[1]	RX buffer error status.
86	pcs_reset	Value of TXRESET or RXRESET ports of the MGT.

Table 15: List of Data Ports in ChipScope Pro Analyzer (Continued)

Data Port Bit(s)	Signal Name	Description
87	rxcommadet	Value of RXCOMMADET port of the MGT.
88	rxrealign	Value of RXREALIGN port of the MGT.
89	pma_lock[0]	Lock status of TX PMA.
90	pma_lock[1]	Lock status of RX PMA.
92:91	txk[1:0]	K-character transmitted status with bit [1] corresponding to byte 0 and bit [0] corresponding to byte 2 of the 32-bit word.
94:93	rxk[1:0]	K-character receive status with bit [1] corresponding to byte 0 and bit [0] corresponding to byte 2 of the 32-bit word.
95	RXDISPERR	Value of RXDISPERR port of the MGT.
96	RXNOTINTABLE	Value of RXNOTINTABLE port of the MGT.
97	GT_DEN	Value of DEN port of the MGT.
98	GT_DWE	Value of DWE port of the MGT.
99	GT_DRDY	Value of DRDY port of the MGT.
100	CB_ACTIVE	Value of ACTIVE port of the Calibration Block.
107:101	GT_DADDR[6:0]	Value of DADDR port of the MGT.
186	link	Link status of the MGT.
187	Aligned	Aligned status of the MGT.
188	bit_error	Bit error status of the MGT.
189	usr_drdy	User-side DRDY status signal.
190	usr_den	User-side DEN signal.
191	CB_DISABLE	Value of DISABLE port of the calibration, might not be available in certain versions of Calibration Block.
192	CB_RESET	Value of RESET port of the Calibration Block.
193	cs_mgt_sel	mgt_sel multiplexer value for ChipScope display.

Table 16: List of Trigger Ports in ChipScope Pro Analyzer

Trigger Port Bit(s)	Signal Name	Description
00	pma_lock[0]	Trigger on TX PMA lock status of the MGT.
01	pma_lock[1]	Trigger on RX PMA lock status of the MGT.
02	gt_error[0]	Trigger on TXBUFERR port of the MGT.
03	gt_error[1]	Trigger on RXBUFERR port of the MGT.
04	rxrealign	Trigger on RXREALIGN port of the MGT.

Table 16: List of Trigger Ports in ChipScope Pro Analyzer (Continued)

Trigger Port Bit(s)	Signal Name	Description
05	rxcommadet	Trigger on RXCOMMADET port of the MGT.
06	RXDISPERR	Trigger on RXDISPERR port of the MGT.
07	RXNOTINTABLE	Trigger on RXNOTINTABLE port of the MGT.
08	CB_ACTIVE	Trigger on ACTIVE port of the Calibration Block.
09	pma_reset	Trigger on RXPMARESET and TXPMARESET ports of the MGT.
16:10	GT_DADDR[6:0]	Trigger on DADDR port of the MGT.
17	GT_DEN	Trigger on DEN port of the MGT.
18	link	Trigger on link status of the MGT.
19	aligned	Trigger on alignment status of the MGT.
20	bit_error	Trigger on single bit error found in the received data of the MGT.
21	usr_den	Trigger on user-side DEN signal.

The following are brief instructions for using the ChipScope Pro Analyzer:

1. Connect the Parallel III or IV cable or the Platform Cable USB to the ML42x Platform JTAG port.
2. Close the Xilinx iMPACT program (or other software programs that use the JTAG boundary-scan chain) to release the boundary-scan chain.
3. Open the ChipScope Pro Analyzer (version 8.1i recommended).
4. If using Parallel III or IV cable, open the JTAG Cable Setup window ([Figure 24](#)) from the ChipScope Pro Analyzer menu (**JTAG Chain** → **Xilinx Parallel Cable**), then set the following:
 - a. Check **Auto Detect Cable Type** in "Parallel Cable Selection"
 - b. Check **5 MHz** in "Speed"
 - c. Check desired parallel port (e.g. **LPT1**) for the JTAG cable
 - d. Click **OK** to quit this window

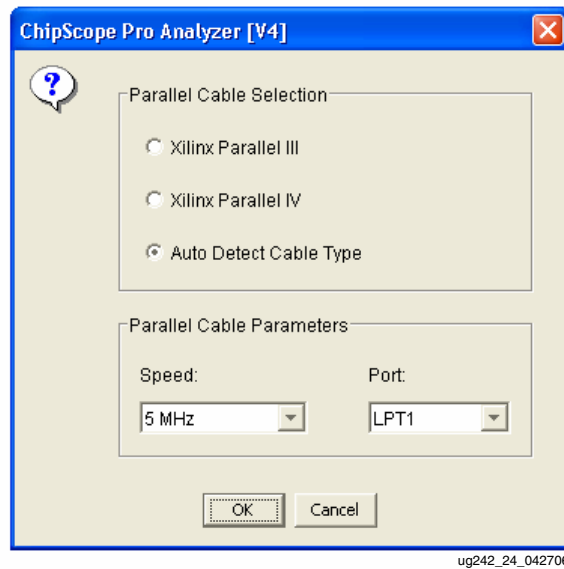


Figure 24: JTAG Cable Setup in ChipScope Pro Analyzer Using Parallel III or IV Cable

5. If using Platform Cable USB, Open the JTAG cable setup window (Figure 25) from the ChipScope Pro Analyzer menu (**JTAG Chain** → **Xilinx Platform USB Cable**) and set the speed to **3 MHz**.

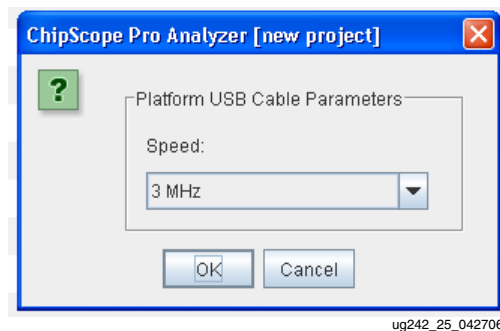
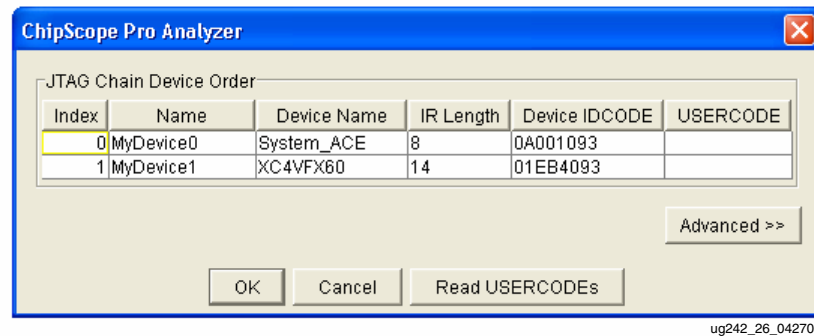


Figure 25: JTAG Cable Setup in ChipScope Pro Analyzer Using Platform USB Cable

6. Open the JTAG chain setup window (Figure 26) from the ChipScope Pro Analyzer menu (**JTAG Chain** → **JTAG Chain Setup**), then set the following:
 - a. Click and highlight the device 1 (XC4VFX20, XC4VFX40, XC4VFX60, XC4VFX100, or XC4VFX140).
 - b. Click **OK** to quit this window.



ug242_26_042706

Figure 26: JTAG Chain setup in ChipScope Pro Analyzer

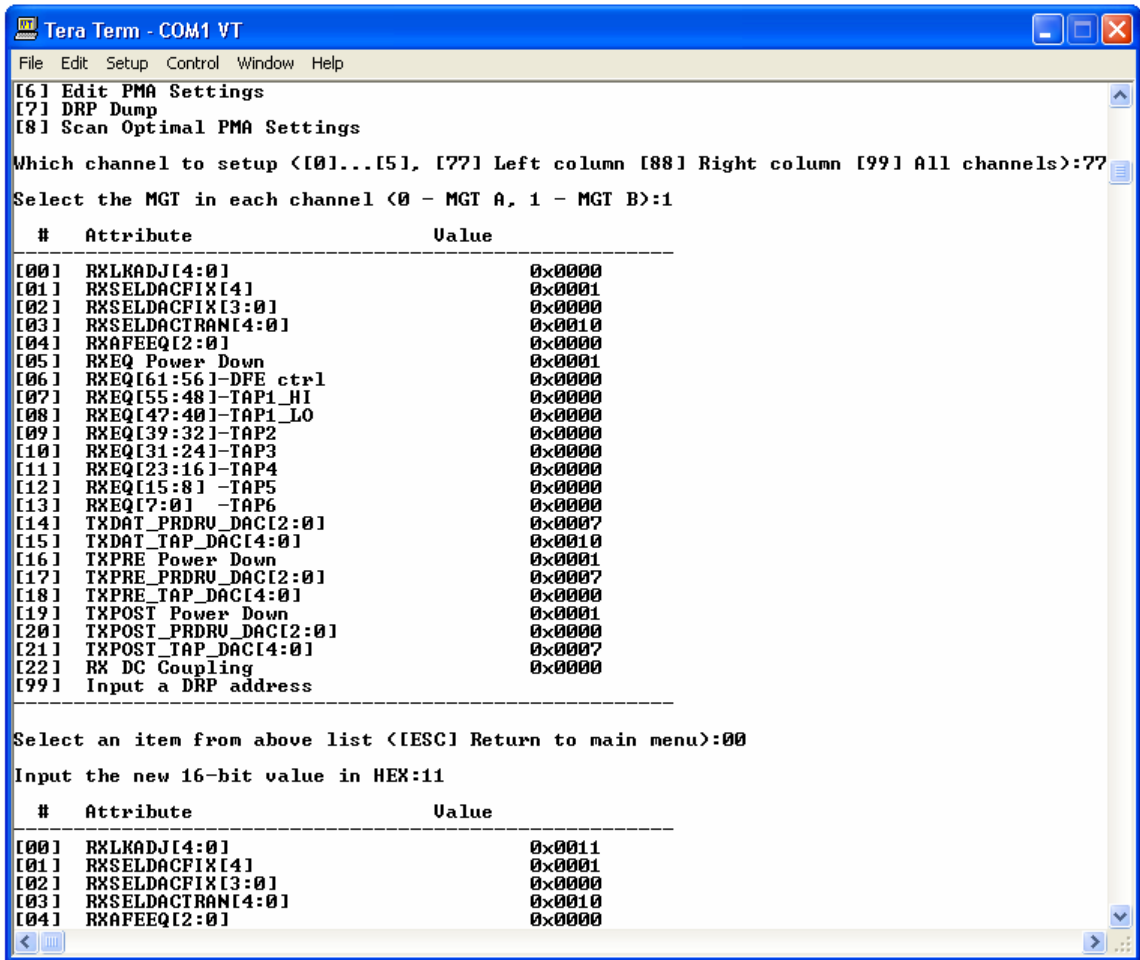
7. Open the ChipScope project file from the menu (**File** → **Open Project**). This automatically displays the Trigger Setup and Waveform windows in the ChipScope Pro Analyzer, as shown in Figure 23.
8. Select one of the units (channel 0 or 1), then run one of the following trigger commands to capture data:
 - a. **Trigger Setup** → **Trigger Immediate**
 - b. **Trigger Setup** → **Run**
(requires the user to first set up a trigger on the selected unit)

[6] Edit PMA Settings

To edit PMA settings, select **[6]** from the main menu. Select the channel to which the settings are to be applied:

- Input a channel number to target a specific channel.
- Press **[77]** to target all channels on the left column.
- Press **[88]** to target all channels on the right column.
- Press **[99]** to target all channels in the design.

After selecting the channel, select the MGT for which the PMA settings are to be edited. The user chooses 0 for MGT A and 1 for MGT B. Figure 27 shows the Edit PMA Attribute window.



```

Tera Term - COM1 VT
File Edit Setup Control Window Help
[6] Edit PMA Settings
[7] DRP Dump
[8] Scan Optimal PMA Settings
Which channel to setup <[0]...[5], [7?] Left column [88] Right column [99] All channels>:7?
Select the MGT in each channel <0 - MGT A, 1 - MGT B>:1
# Attribute Value
-----
[00] RXLKADJ[4:0] 0x0000
[01] RXSELDACFIX[4] 0x0001
[02] RXSELDACFIX[3:0] 0x0000
[03] RXSELDACRANI[4:0] 0x0010
[04] RXAFEEQ[2:0] 0x0000
[05] RXEQ Power Down 0x0001
[06] RXEQ[61:56]-DFE ctrl 0x0000
[07] RXEQ[55:48]-TAP1_HI 0x0000
[08] RXEQ[47:40]-TAP1_LO 0x0000
[09] RXEQ[39:32]-TAP2 0x0000
[10] RXEQ[31:24]-TAP3 0x0000
[11] RXEQ[23:16]-TAP4 0x0000
[12] RXEQ[15:8]-TAP5 0x0000
[13] RXEQ[7:0]-TAP6 0x0000
[14] TXDAT_PRDRU_DAC[2:0] 0x0007
[15] TXDAT_TAP_DAC[4:0] 0x0010
[16] TXPRE Power Down 0x0001
[17] TXPRE_PRDRU_DAC[2:0] 0x0007
[18] TXPRE_TAP_DAC[4:0] 0x0000
[19] TXPOST Power Down 0x0001
[20] TXPOST_PRDRU_DAC[2:0] 0x0000
[21] TXPOST_TAP_DAC[4:0] 0x0007
[22] RX DC Coupling 0x0000
[99] Input a DRP address
-----
Select an item from above list <[ESC] Return to main menu>:00
Input the new 16-bit value in HEX:11
# Attribute Value
-----
[00] RXLKADJ[4:0] 0x0011
[01] RXSELDACFIX[4] 0x0001
[02] RXSELDACFIX[3:0] 0x0000
[03] RXSELDACRANI[4:0] 0x0010
[04] RXAFEEQ[2:0] 0x0000

```

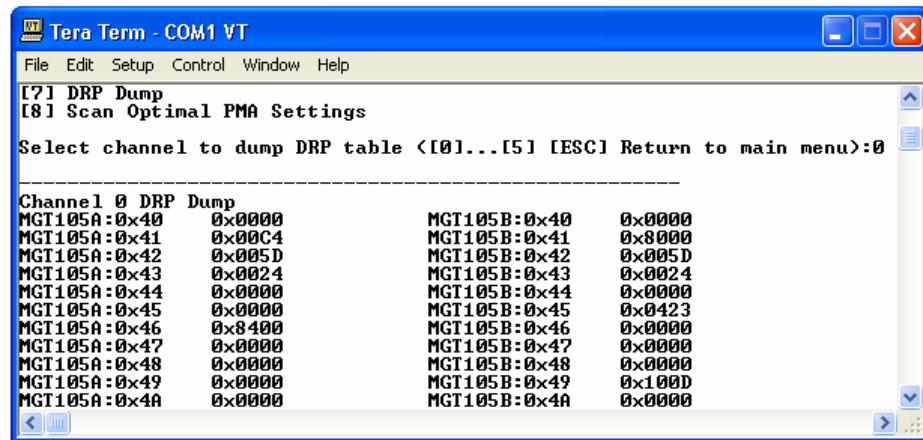
ug242_27_042706

Figure 27: Edit PMA Attribute Window

As shown in Figure 27, the software displays a set of PMA attributes to be edited and the corresponding values in hexadecimal. To edit any attribute, select the index number of the attribute (00 in this case) and the new value for this attribute (11). The software then writes this new value into the selected attribute and updates the table with the new value.

[7] DRP Dump

To perform a DRP Dump, select [7] from the main menu. Select the channel number for which the DRP dump is sought. The software then displays the DRP values for both MGTs (A and B) of the selected channel. Figure 28 shows the DRP dump window.



ug242_28_042706

Figure 28: DRP Dump Window

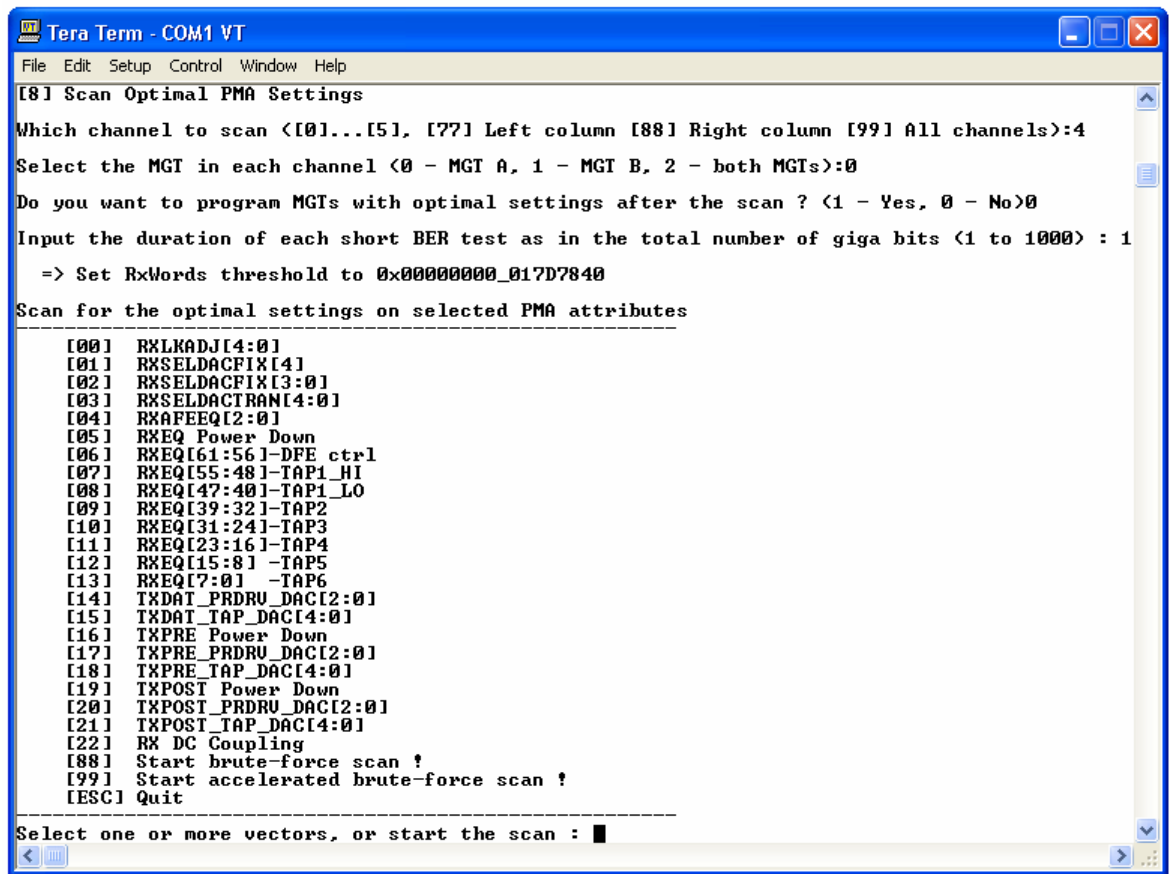
[8] Scan Optimal PMA Settings

To perform the scan function, press **[8]** from the main menu. This function is used to find the optimal settings for a given link. For example, to perform a scan function on MGT A within channel 4, type the commands listed in [Table 17](#).

Table 17: User Commands for Scan Function

Command	Description
[8]	Press [8] from the main menu to enter the Scan function.
[4]	Press [4] to select the channel number
[0]	Press [0] to select MGT A.
[0]	Press [0] to program the optimal settings manually. Press [1] to force the software to program the optimal settings.
[1]	Press [1] to input the duration of BER test. This is dependent on target line rate and how fast the user wants to run the BER test.

Figure 29 shows the Scan window after the user inputs.



```

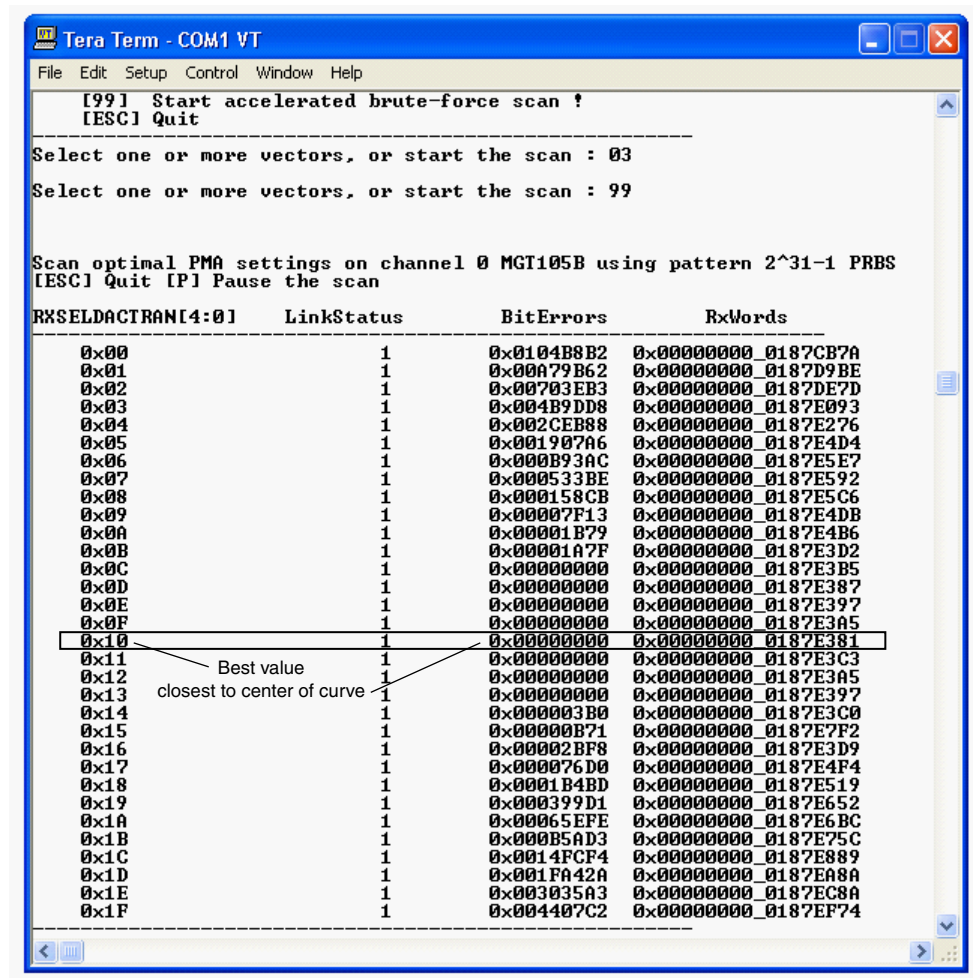
Tera Term - COM1 VT
File Edit Setup Control Window Help
[8] Scan Optimal PMA Settings
Which channel to scan <[0]...[5], [77] Left column [88] Right column [99] All channels>:4
Select the MGI in each channel <0 - MGI A, 1 - MGI B, 2 - both MGIs>:0
Do you want to program MGIs with optimal settings after the scan ? <1 - Yes, 0 - No>0
Input the duration of each short BER test as in the total number of giga bits <1 to 1000> : 1
=> Set RxWords threshold to 0x00000000_017D7840
Scan for the optimal settings on selected PMA attributes
-----
[00] RXLRADJ[4:0]
[01] RXSELDACFIX[4]
[02] RXSELDACFIX[3:0]
[03] RXSELDACTRAN[4:0]
[04] RXAFEEQ[2:0]
[05] RXEQ Power Down
[06] RXEQ[61:56]-DFE ctrl
[07] RXEQ[55:48]-TAP1_HI
[08] RXEQ[47:40]-TAP1_LO
[09] RXEQ[39:32]-TAP2
[10] RXEQ[31:24]-TAP3
[11] RXEQ[23:16]-TAP4
[12] RXEQ[15:8]-TAP5
[13] RXEQ[7:0]-TAP6
[14] TXDAT_PRDRU_DAC[2:0]
[15] TXDAT_TAP_DAC[4:0]
[16] TXPRE Power Down
[17] TXPRE_PRDRU_DAC[2:0]
[18] TXPRE_TAP_DAC[4:0]
[19] TXPOST Power Down
[20] TXPOST_PRDRU_DAC[2:0]
[21] TXPOST_TAP_DAC[4:0]
[22] RX DC Coupling
[88] Start brute-force scan ?
[99] Start accelerated brute-force scan ?
[ESC] Quit
-----
Select one or more vectors, or start the scan : █

```

ug242_29_042706

Figure 29: Scan Window Showing User Inputs

The software now displays a set of PMA attributes that can be scanned. Select the index number of the attribute to be scanned. A brute-force scan (slower) or an accelerated brute-force scan (faster) can then be performed. Figure 30 shows the result of an accelerated brute-force scan performed on RXSELDACTRAN[4:0]. To perform an accelerated scan as shown in Figure 30, select the index number of this attribute (03) and then select [99].



ug242_30_042706

Figure 30: Accelerated Brute-Force Scan Results Performed on RXSELDACTRAN[4:0]

The user can now pick the best value (at the center of the “bell” curve, as shown in Figure 30) and program it into the system.

VIO Interface

The XBERT reference design also provides a VIO user interface in addition to the terminal interface. This is a simpler alternative to the terminal interface. The VIO interface does not include the PPC405 or UART modules, and does not provide software features such as brute-force scan, PMA clock mode selection, and DRP dump. This interface needs a JTAG cable and PC running ChipScope Pro Analyzer.

Figure 31 shows the ChipScope VIO Interface window.

Bus/Signal	Value	
CHN_SEL	05	
MGT_SEL (A:0, B:1)	1	
ALIGNED	<input type="radio"/>	
LINK	<input type="radio"/>	
PMA_TX_LOCK	<input checked="" type="radio"/>	
PMA_RX_LOCK	<input checked="" type="radio"/>	↕
DCM_TX_LOCK	<input checked="" type="radio"/>	
DCM_RX_LOCK_A	<input checked="" type="radio"/>	
DCM_RX_LOCK_B	<input checked="" type="radio"/>	
freq_TXUSRCLK2	155	↕
freq_GREFCLK	0	
ERR_BIT_COUNT	92FE0C69	↕
RX_WORD_COUNT	01F2AF31	↕
ERR_STICKY_RIGHT[11:0]	000000111110	
ERR_STICKY_LEFT[11:0]	000000111110	
LINK_RIGHT[11:0]	000000000001	
LINK_LEFT[11:0]	000000000001	
BITS_PER_WORD	40	
NUM_OF_CHANNEL	6	
CHN_SEL	00	
CHN_ALL	<input type="text" value="0"/>	
MGT_SEL	<input type="text" value="0"/>	

ug242_31_042706

Figure 31: ChipScope Pro VIO Interface Window

The VIO interface provides the link status, PMA (TX and RX) Lock status, RX Word, Error Bit count, channel and MGT select functions all necessary to run BER testing. In addition, the VIO interface also provides access to the DRP port so that the user can edit any DRP address space (not shown in the figure). The VIO interface needs to be enabled by turning on dip switch 10 on SW6, which is at the bottom row on ML42x boards. If this switch is turned off, then the VIO interface is disabled and the terminal interface enabled. If this switch is turned on, then the VIO interface is enabled and the terminal interface disabled.

Pattern Selection

The XBERT reference design supports several types of PRBS/clock patterns that can be used to construct data for the MGTs. These patterns can be selected (one at a time) to load on each channel through the terminal or VIO interface. Table 18 lists all the supported patterns in the XBERT reference design.

Table 18: Supported Patterns in the XBERT Reference Design

Pat-tern ID	Pattern Name	Pattern/Polynomial	Length of Sequence (bits)	Consecu-tive Zeros	Notes
0	1/2X Clock	101010...	2	0	This pattern can be used as a clock pattern whose frequency is equal to $\frac{1}{2}$ of the MGT serial speed, generating up to a 5 GHz differential clock on the transceiver serial outputs. This pattern also can be used as a high-frequency test pattern as defined in IEEE Std 802.3-2002 [Ref 7].
1	1/10X or 1/8X Clock	5 ones, 5 zeros or 4 ones, 4 zeros	10 or 8	5 or 4	This pattern can be used as a clock pattern whose frequency is equal to $\frac{1}{10}$ or $\frac{1}{8}$ of the MGT serial speed, generating up to a 1.3 GHz differential clock on the transceiver serial outputs. This pattern can also be used as a low-frequency test pattern as defined in IEEE Std 802.3-2002 [Ref 7].
2	1/20X or 1/16X Clock	10 ones, 10 zeros or 8 ones, 8 zeros	20 or 16	10 or 8	This pattern can be used as a clock pattern whose frequency is equal to $\frac{1}{20}$ or $\frac{1}{16}$ of the MGT serial speed, generating up to a 645 MHz differential clock on the transceiver serial outputs.
3	$2^7 - 1$ PRBS	$x^7 + x^6 + 1$ (non-inverted signal)	$2^7 - 1$	7	Uses a proprietary polynomial that is not an ITU-T standard.
4	$2^9 - 1$ PRBS	$x^9 + x^5 + 1$ (non-inverted signal)	$2^9 - 1$	8	ITU-T Recommendation O.150, Section 5.1 [Ref 6].
5	$2^{11} - 1$ PRBS	$x^{11} + x^9 + 1$ (non-inverted signal)	$2^{11} - 1$	10	ITU-T Recommendation O.150, Section 5.2 [Ref 6].
6	$2^{15} - 1$ PRBS	$x^{15} + x^{14} + 1$ (non-inverted signal)	$2^{15} - 1$	15	ITU-T Recommendation O.150, Section 5.3 [Ref 6]. This is one of the recommended test patterns in the SONET specification.
7	$2^{20} - 1$ PRBS	$x^{20} + x^3 + 1$ (non-inverted signal)	$2^{20} - 1$	19	ITU-T Recommendation O.150, Section 5.4 [Ref 6]. This is one of the recommended test patterns in the SONET specification.
8	$2^{23} - 1$ PRBS	$x^{23} + x^{18} + 1$ (inverted signal)	$2^{23} - 1$	23	ITU-T Recommendation O.150, Section 5.6 [Ref 6]. This is one of the recommended test patterns in the SONET specification.
9	$2^{29} - 1$ PRBS	$x^{29} + x^{27} + 1$ (inverted signal)	$2^{29} - 1$	29	ITU-T Recommendation O.150, Section 5.7 [Ref 6].
10	$2^{31} - 1$ PRBS	$x^{31} + x^{28} + 1$ (inverted signal)	$2^{31} - 1$	31	ITU-T Recommendation O.150, Section 5.8 [Ref 6]. This is a recommended PRBS test pattern for 10 Gigabit Ethernet. See IEEE Std 802.3ae-2002 [Ref 8].
11	Reserved				

Table 18: Supported Patterns in the XBERT Reference Design (Continued)

Pat-tern ID	Pattern Name	Pattern/Polynomial	Length of Sequence (bits)	Consecu-tive Zeros	Notes
12	Idle Pattern	<p>K28.5+, K28.5-, K28.5+, . . . (if 8B/10B bypassed and XBERT data width is 20 or 40 bits)</p> <p>or</p> <p>K28.5, D16.2, K28.5, D16.2, . . . (if 8B/10B enabled)</p> <p>or</p> <p>A1A1A1A1A2A21A2A2 (0xF6F6F6F628282828) ... (if 8B/10B bypassed and XBERT data width is 16 or 32 bits)</p>	20 or 64	5	
13	User Pattern	<p>Contains a repeated 16-bit, 20-bit, 32-bit, or 40-bit configurable pattern.</p> <p>If 8B/10B is enabled, this pattern can be configured as a combination of a K-character and/or a data character.</p> <p>If 8B/10B is bypassed, the user can specify any 16-bit, 20-bit, 32-bit, or 40-bit pattern, depending on the XBERT data width selected.</p>	1 to 40	0 to 39	<p>See XAPP713 [Ref 1] for a bit-mapping of the user pattern.</p> <p>This pattern cannot be all zeros or all ones producing invalid data with an out-of-range run length.</p>
14	Reserved				
15	Counter Pattern	<p>000000000, 111111111, . . . (40-bit XBERT)</p> <p>or</p> <p>00000000, 11111111, . . . (32-bit XBERT)</p> <p>or</p> <p>00000, 11111, . . . (20-bit XBERT)</p> <p>or</p> <p>0000, 1111, . . . (16-bit XBERT)</p>	Approx. from 320 (in 20-bit XBERT) to 640 (in 40-bit XBERT)	16 to 40	

References

1. Xilinx, Inc., XAPP713: *Virtex-4 RocketIO Bit-Error Rate Tester*, <http://www.xilinx.com/bvdocs/appnotes/xapp713.pdf>. This document provides detailed information regarding the XBERT reference design on Virtex-4.
2. Xilinx, Inc., UG076: *Virtex-4 RocketIO Multi-Gigabit Transceiver User Guide*, <http://www.xilinx.com/bvdocs/userguides/ug076.pdf>.
3. Xilinx, Inc., UG070: *Virtex-4 FPGA User Guide*, <http://www.xilinx.com/bvdocs/userguides/ug070.pdf>.
4. Xilinx, Inc., DS080: *System ACE Compact Flash Solution*, <http://www.xilinx.com/bvdocs/publications/ds080.pdf>.
5. Xilinx, Inc.: Embedded Development Kit, <http://www.xilinx.com/edk>.
6. ITU-T Recommendation O.150, *General Requirements for Instrumentation for Performance Measurements on Digital Transmission Equipment*
7. IEEE Standard 802.3-2002, Part 3: *Carrier sense multiple access with collision detection (CSMA/CD) access method and physical layer specifications*
8. IEEE Standard 802.3ae-2002, *Amendment: Media Access Control (MAC) Parameters, Physical Layer, and Management Parameters for 10 Gb/s Operation*.

